



How to Register InfoRetriever

Your institution has renewed their group subscription to InfoPOEMs. As a result, if you are currently using InfoRetriever on your handheld device and/or Windows PC, you must RE-REGISTER it so it will continue to run. If you fail to RE-REGISTER before **expiration date**, InfoRetriever will stop working. PLEASE NOTE THAT YOU DO NOT NEED TO REINSTALL INFORETRIEVER. For directions how to RE-REGISTER, please see below:

PocketPC

- Visit: <http://library.uchc.edu/>
- Click on PDA Resources (menu on the left)
- Click on Medical Databases
- Find InfoRetriever in the list and click on: Discount and Installation
- Click on Registration Page
- Enter your e-mail address, name and Pocket PC as your platform. It is important that you enter a valid email address, as your license code will be emailed to the address that you provide.

* Email Address:

* Name:

* Platform:

- **Next, you will see one of two screens.** If you have never registered on-line, you will see a screen asking you to enter a serial ID. However, if you have registered on line in the past, you will have the option to have the old license code sent to you or to generate a new license code. Select the option to generate a new license code.



SerialID:

The SerialID is **NOT** the manufacturer's serial number on the o
InfoRetriever program.

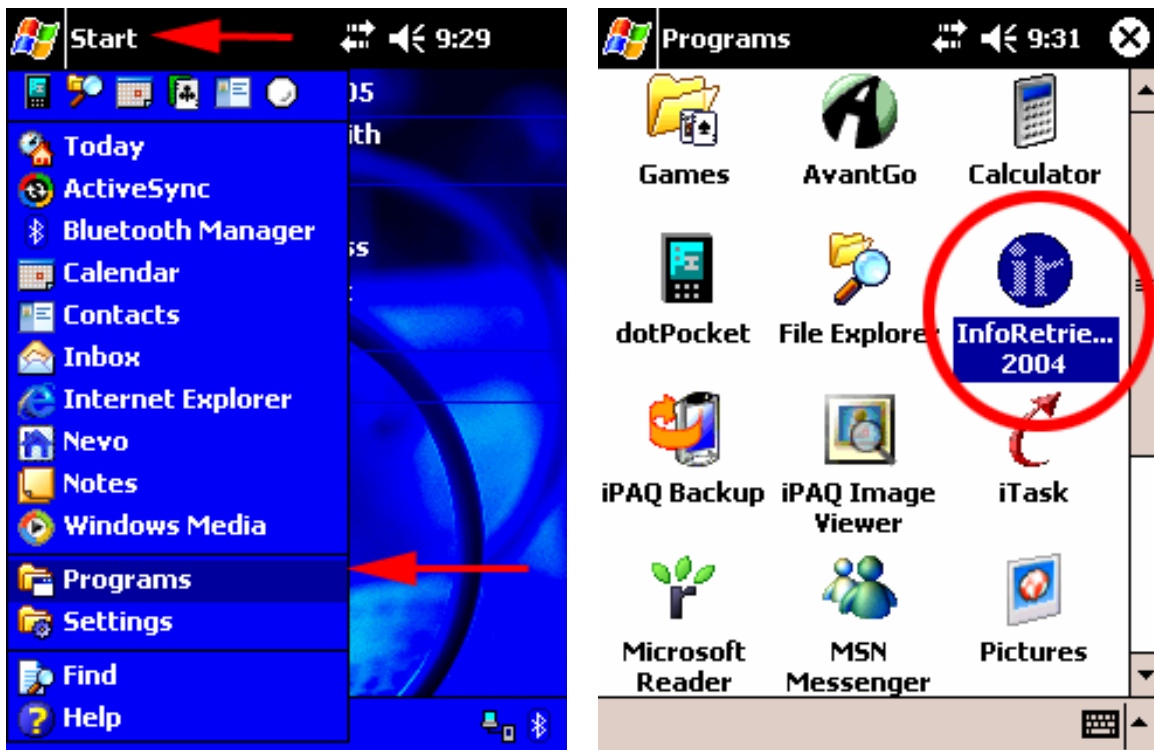
To locate your SerialID, start InfoRetriever, choose **File -> Reg
Serial ID:** should be filled in for you. Type that number here.

Get License Code

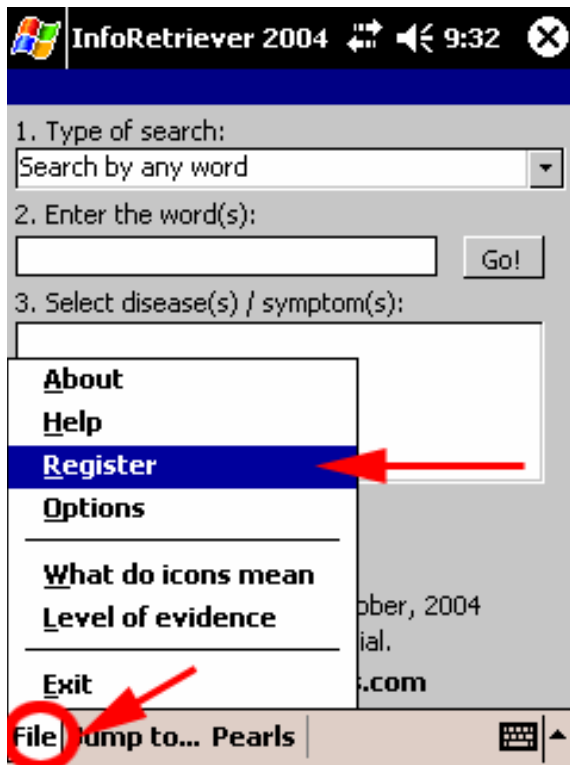
- **Next, enter in your Serial ID.** The SerialID is NOT the manufacturer's serial number on the outside of your device; the SerialID is generated by the InfoRetriever program. **To locate your SerialID, start InfoRetriever, choose File -> Register InfoRetriever from the application menu. The box labeled Serial ID: should be filled in for you. Type that number in the InfoRetriever Registration page.**

1

2



3



4



5

Enter the **Serial ID** and Click on **Get License Code**

SerialID:

The SerialID is **NOT** the manufacturer's serial number on the o InfoRetriever program.

To locate your SerialID, start InfoRetriever, choose **File -> Reg**
Serial ID: should be filled in for you. Type that number here.



- **An automatic e-mail will be sent to you with a license code.** This e-mail will be sent to within minutes of you submitting a request. Start InfoRetriever; choose File -> Register InfoRetriever from the application menu. Enter the 16 digit license code sent to you. If applicable, make sure you enter zeros and not the letter O. Press set license and then OK to the pop up box. Tap on the EXIT/CLOSE box. Then, tap in the lower left hand corner and select FILE – EXIT.

The following message will appear in your email:

License Code

The license information that has previously been registered with your email address is:

Platform: Pocket PC

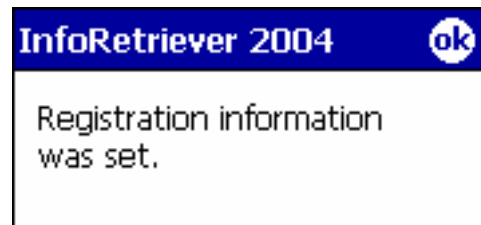
SerialID: [REDACTED]

License Code: [REDACTED] ("0" and "1" are always the numbers zero and one)

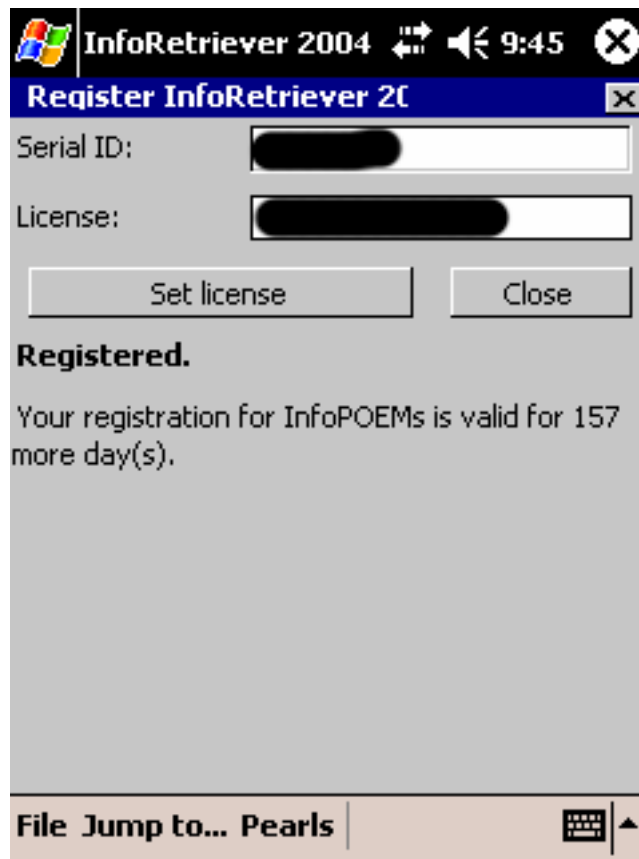
Registered On: 2004-10-12

Expires On: 2005-09-20

Enter the License # and Tap Set License



- **Verify that IR is re-registered.** Start InfoRetriever, tap the lower left corner of the screen, and choose File -> Register InfoRetriever from the application menu. At the bottom of the screen is should read REGISTERED and list the number of days left in your subscription.



PALM OS

- Visit: <http://library.uchc.edu/>
- Click on PDA Resources (menu on the left)
- Click on Medical Databases
- Find InfoRetriever in the list and click on: Discount and Installation
- Click on Registration Page
- Enter your e-mail address, name and Palm OS as your platform. It is important that you enter a valid email address, as your license code will be emailed to the address that you provide.

* Email Address:

* Name:

* Platform:

- Next, you will see one of two screens. If you have never registered on-line, you will see a screen asking you to enter a serial ID. However, if you have registered on line in the past, you will have the option to have the old license code sent to you or to generate a new license code. Select the option to generate a new license code.

SerialID:

The SerialID is **NOT** the manufacturer's serial number on the o InfoRetriever program.

To locate your SerialID, start InfoRetriever, choose **File -> Reg Serial ID:** should be filled in for you. Type that number here.

- **Next, enter in your Serial ID.** The SerialID is NOT the manufacturer's serial number on the outside of your device; the SerialID is generated by the InfoRetriever program. To locate your SerialID, start InfoRetriever, tap the upper left corner of the screen, and choose File -> Register InfoRetriever from the application menu. The box labeled Serial ID: should be filled in for you. Type that number here.
- **An automatic e-mail will be sent to you with a license code.** This e-mail will be sent to within minutes of you submitting a request. Start InfoRetriever, tap the upper left corner of the screen, and choose File -> Register InfoRetriever from the application menu. Enter the 16 digit license code sent to you. If applicable, make sure you enter zeros and not the letter O. Press set license and then OK to the pop up box. Tap on the EXIT/CLOSE box. Then, tap in the upper left hand corner and select FILE -> EXIT.

License Code

The license information that has previously been registered with your email address is:

Platform: Pocket PC

SerialID: [REDACTED]

License Code: [REDACTED] ("0" and "1" are always the numbers zero and one)

Registered On: 2004-10-12

Expires On: 2005-09-20

- **Verify that IR is re-registered.** Start InfoRetriever, tap the upper left corner of the screen, and choose File -> Register InfoRetriever from the application menu. At the bottom of the screen it should read REGISTERED and list the number of days left in your subscription.

If you have any problems or difficulties while installing, registering, or using your InfoRetriever® program, consult our Frequently Asked Questions, <http://info poems.com/support/faq.html> or call 877-633-7636. In addition, you may send an e-mail to support@info poems.com.