

Lexi Comp Re-Installation (Pocket PC)

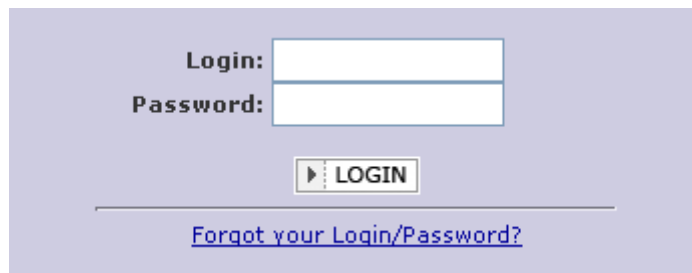
- **Step 1: Retrieve your Login & Password Information**

- Check your email for an email from the Lexi-Comp Company

or

- If you forgot your Login and Password:
Visit <http://www.lexi.com/enterkeys>

- Click on Forgot your Login/Password?



- Enter your email address and click on

Forgot Your Login/Password?

Please enter the email address that you registered and/or purchased your products under at www.lexi.com below and click "Submit" **once**. This request may take several seconds. Please wait for a response.

E-Mail Address:

- Lexi will email you your account information

Account Found

Your account information has been sent to the email address you provided.

- **Step 2: Reinstall Lexi-Drugs and Lexi-Interact using Lexi-Connect**

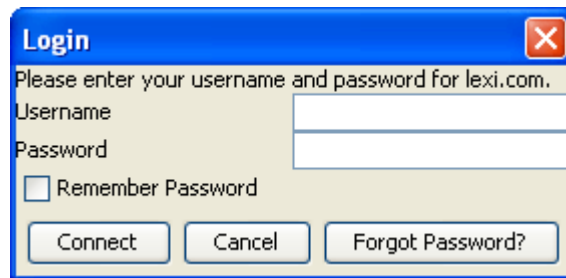
Note: if you do not have Lexi-Connect installed on your computer you will need to do so. Detailed directions on downloading Lexi-Connect can be found at:

<http://library.uchc.edu/mdconsult/pda/uchcpda.html#lexi>
and clicking on: Installation Instructions

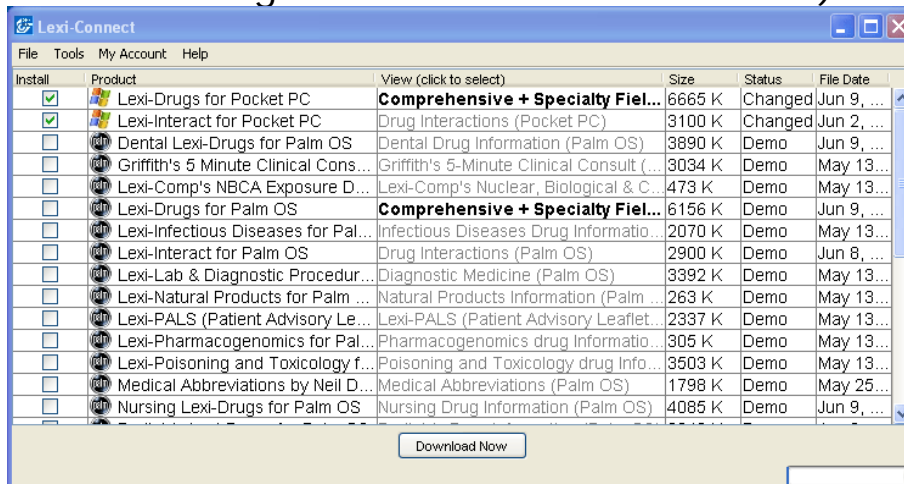
- Startup the Lexi-Connect program



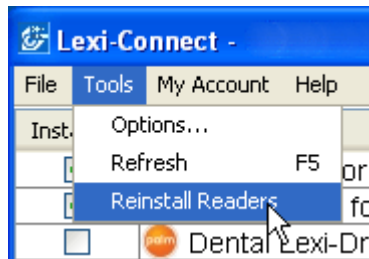
- Login with your Account Login and Password



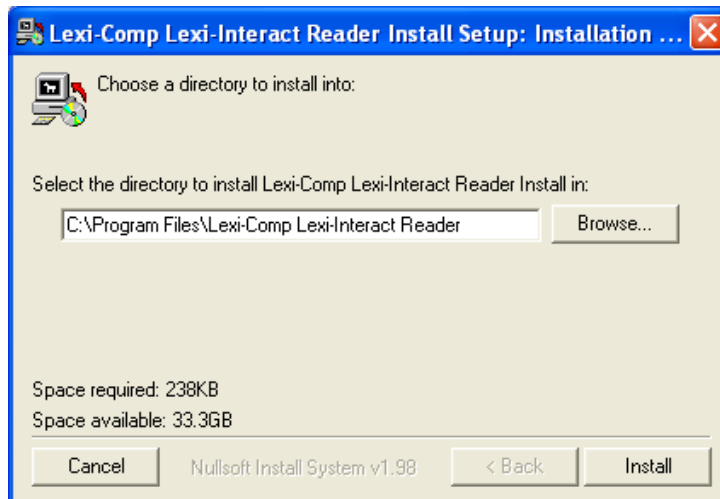
- Check the programs you would like to download (Lexi-Drugs & Lexi-Interact are the two programs offered through the Health Center discount)

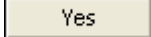


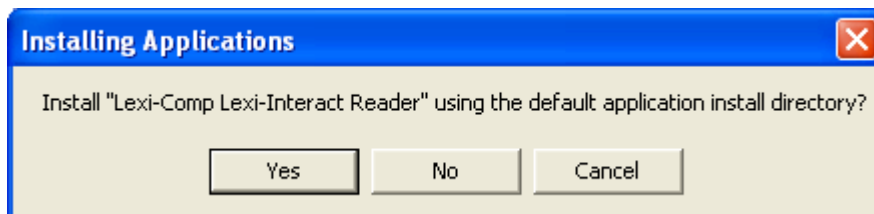
- o Go to Tools and select: Reinstall Readers



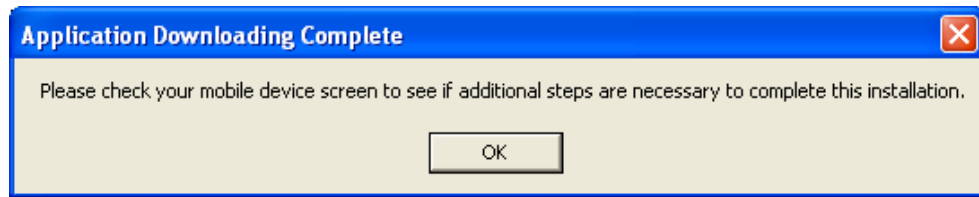
- o Install the Lexi-Interact Reader: Click on 



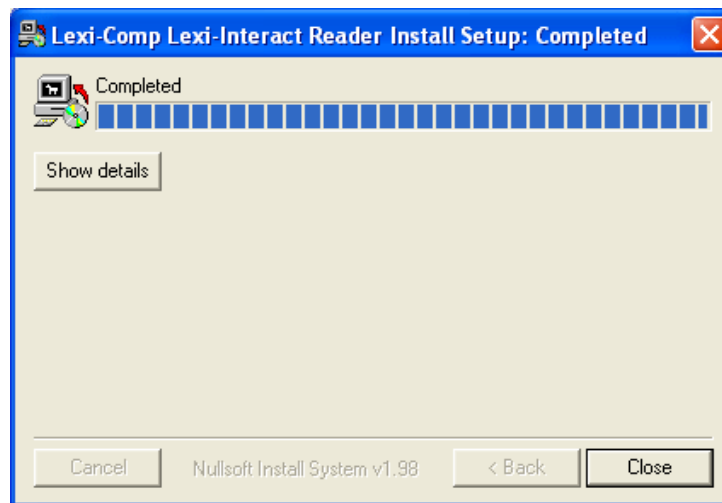
- o Install Lexi-Interact on your PDA: Click on 



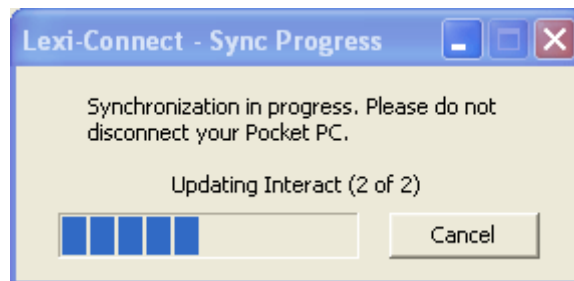
- Lexi-Interact will now install on your PDA: Click on



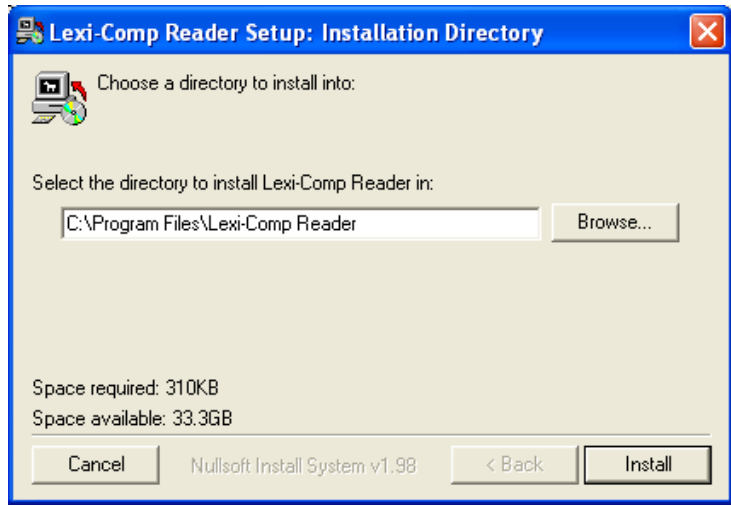
-  the Lexi-Interact Installation window



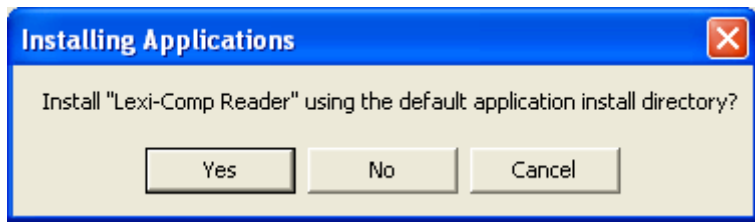
Note: Lexi-Connect may begin syncing your PDA to ensure you have the most up-to-date version of Lexi-Comp software. You may continue to install any other Lexi-Comp software while your PDA is syncing – the sync window will look like this:



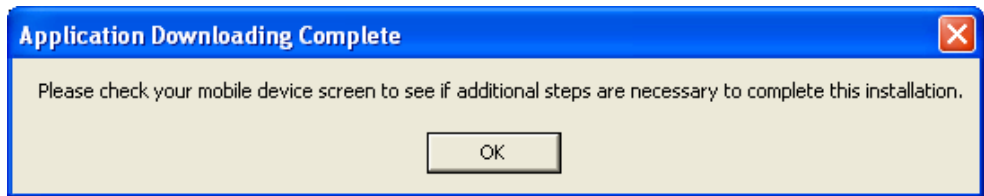
- o Install the Lexi-Comp Reader: Click on



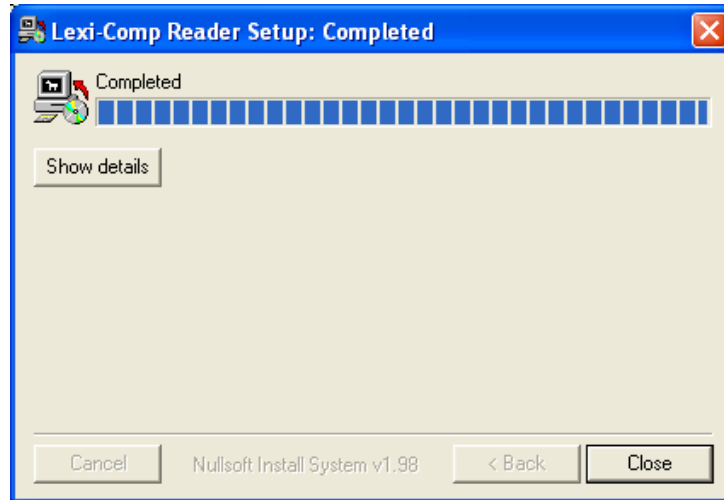
- o Install Lexi-Comp on your PDA: Click on



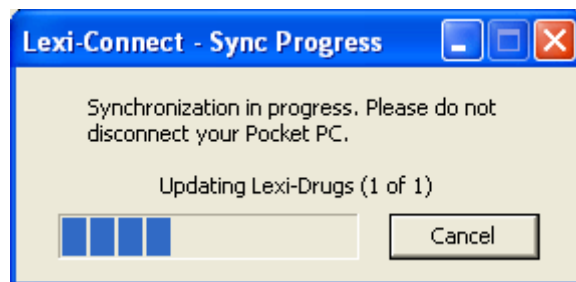
- o Lexi-Comp will now install on your PDA: Click on

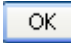


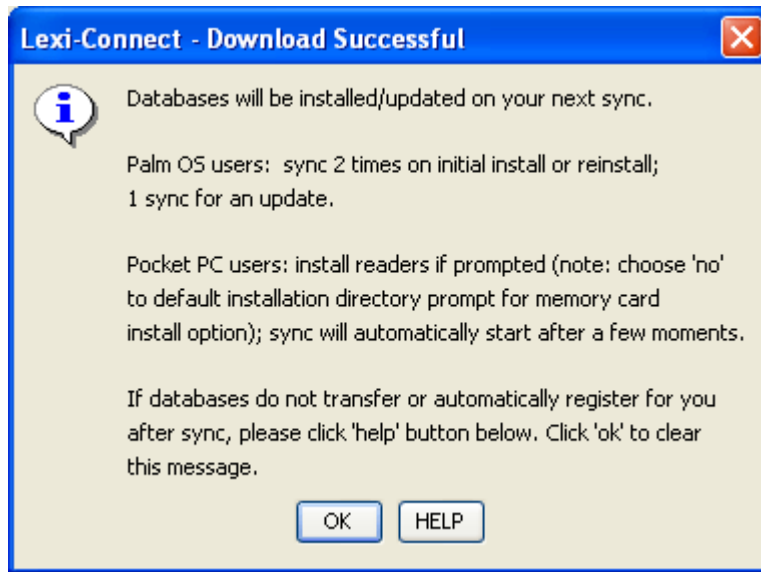
-  the Lexi-Comp Installation window



- In a few seconds Lexi-Connect will begin syncing with your PDA



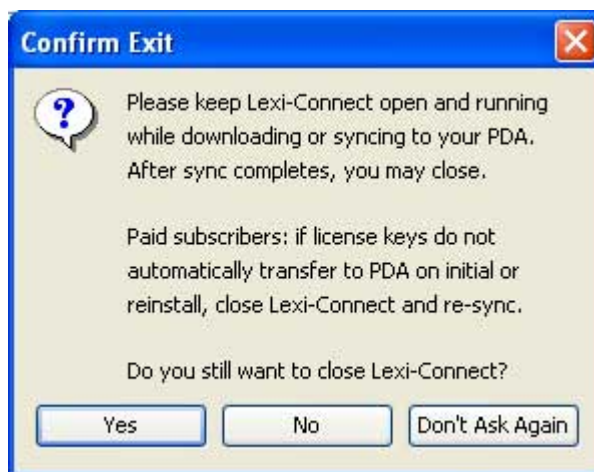
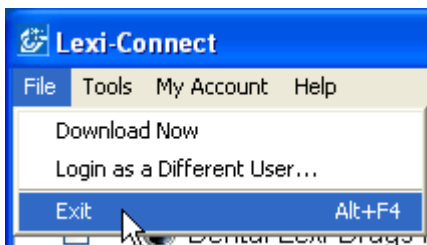
- o While your PDA is syncing you may close the "Download Successful" window: Click on 



- o Wait for Lexi-Connect to finish syncing with your PDA – this process will have completed when the status of the programs you have downloaded read "Current"

Install	Product	View (click to select)	Size	Status	File Date
<input checked="" type="checkbox"/>	Lexi-Drugs for Pocket PC	Comprehensive + Specialty Fiel...	6665 K	Current	Jun 9, ...
<input checked="" type="checkbox"/>	Lexi-Interact for Pocket PC	Drug Interactions (Pocket PC)	3100 K	Current	Jun 2, ...
<input type="checkbox"/>	Dental Lexi-Drugs for Palm OS	Dental Drug Information (Palm OS)	3890 K	Demo	Jun 9, ...
<input type="checkbox"/>	Griffith's 5 Minute Clinical Cons...	Griffith's 5-Minute Clinical Consult (...)	3034 K	Demo	May 13...
<input type="checkbox"/>	Lexi-Comp's NBCA Exposure D...	Lexi-Comp's Nuclear, Biological & C...	473 K	Demo	May 13...
<input type="checkbox"/>	Lexi-Drugs for Palm OS	Comprehensive + Specialty Fiel...	6156 K	Demo	Jun 9, ...
<input type="checkbox"/>	Lexi-Infectious Diseases for Pal...	Infectious Diseases Drug Informatio...	2070 K	Demo	May 13...
<input type="checkbox"/>	Lexi-Interact for Palm OS	Drug Interactions (Palm OS)	2900 K	Demo	Jun 8, ...
<input type="checkbox"/>	Lexi-Lab & Diagnostic Procedur...	Diagnostic Medicine (Palm OS)	3392 K	Demo	May 13...
<input type="checkbox"/>	Lexi-Natural Products for Palm ...	Natural Products Information (Palm ...)	263 K	Demo	May 13...
<input type="checkbox"/>	Lexi-PALS (Patient Advisory Le...	Lexi-PALS (Patient Advisory Leaflet...	2337 K	Demo	May 13...
<input type="checkbox"/>	Lexi-Pharmacogenomics for Pal...	Pharmacogenomics drug informatio...	305 K	Demo	May 13...
<input type="checkbox"/>	Lexi-Poisoning and Toxicology f...	Poisoning and Toxicology drug Info...	3503 K	Demo	May 13...
<input type="checkbox"/>	Medical Abbreviations by Neil D...	Medical Abbreviations (Palm OS)	1798 K	Demo	May 25...
<input type="checkbox"/>	Nursing Lexi-Drugs for Palm OS	Nursing Drug Information (Palm OS)	4085 K	Demo	Jun 9, ...

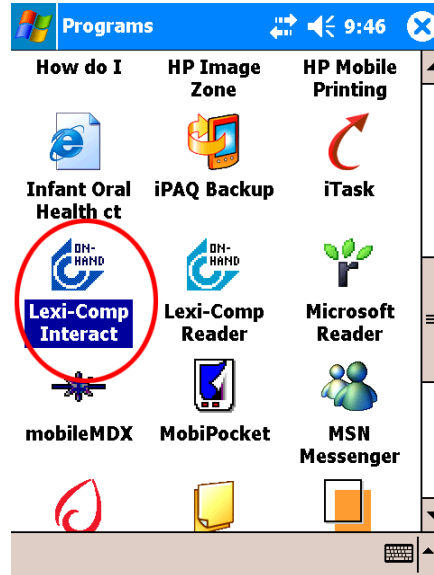
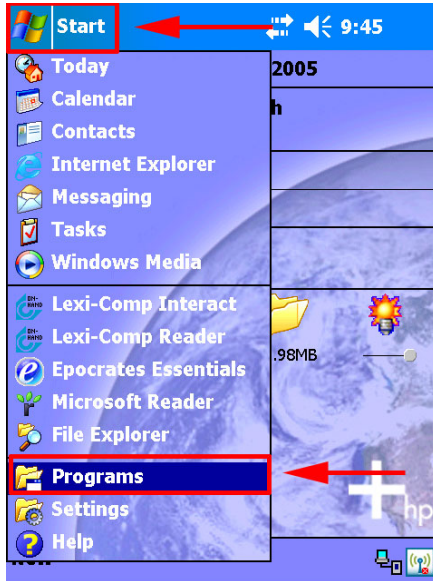
- o You may now exit out of Lexi-Connect - When prompted to confirm exiting: Click



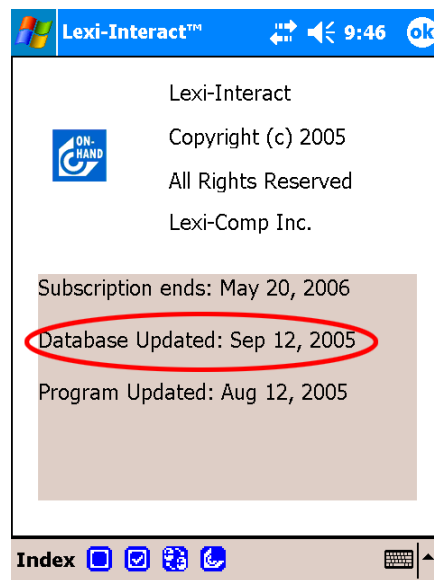
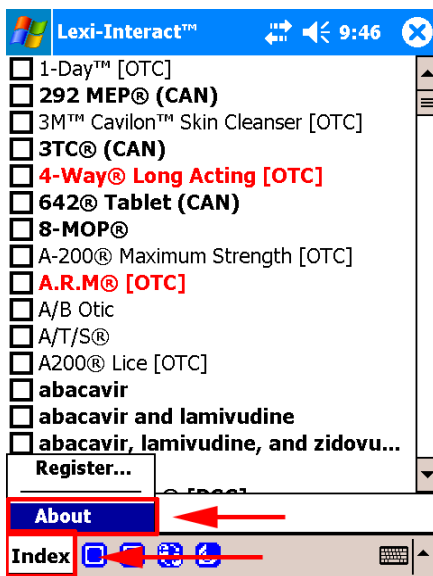
- **Step 3: Make sure Lexi Is Up To Date**

- o How to check Lexi-Interact date

- Go to the Start Menu and Select Programs
- Select Lexi-Interact

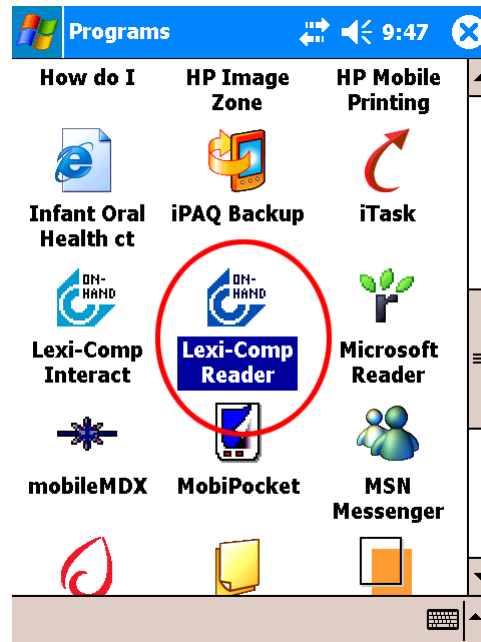
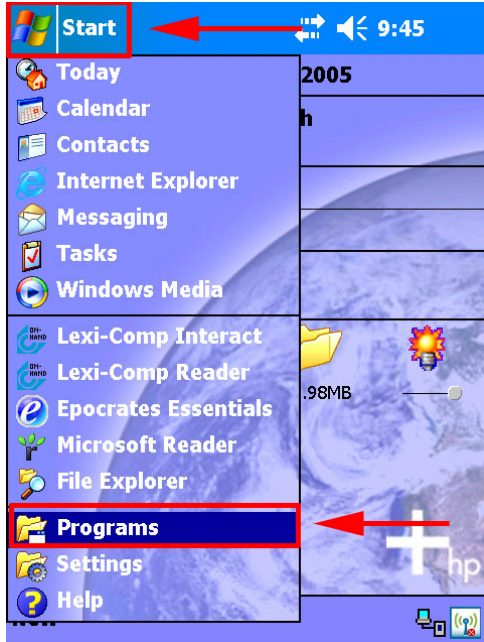


- Click on Index and Select About
- Database should list a recent date



o How to check Lexi-Drugs date

- Go to the Start Menu and Select Programs
- Select Lexi-Comp Reader



- Click on Book and Select Book Info
- File Date should list a recent date

