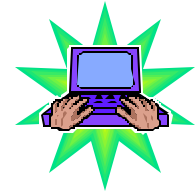


Consumer Health Information: Networking & Technology

April 30, 2002

Publick House, Sturbridge, MA



PROGRAM

- 8:30 Registration & Coffee
- 9:00 Welcome & Logistics of Day - Ralph Arcari, MLS, PhD, Director, Lyman Maynard Stowe Library, University of Connecticut; & Evelyn Morgen, MLS, Associate Director, Lyman Maynard Stowe Library.
- 9:15 Charles G. Huntington, MPH, PA, Associate Director, Connecticut AHEC Program; Program Administrator, Connecticut Health; University of Connecticut Health Center.
The AHEC's role in facilitating the consumer's access to health information.
- 10:00 George Wu, M.D. Professor, Department of Medicine; Chief, Division of Gastroenterology-Hepatology, University of Connecticut School of Medicine and Fran and Robert Nadeau, two members of a Hepatitis C Support Group.
Current Public Health Issues – Patient & Professional Perspectives
Hepatitis C : the information needs of patients & professionals.
- 10:45 B R E A K
- 11:00 Elizabeth Schneider, MLS, AHIP; Director, Treadwell Library, Massachusetts General Hospital
Meeting the information needs of urban community health professionals and residents. Use of Internet resources including MedlinePLUS and PubMed.
- 11:45 Alberta Richetelle , MLS, MPH, Program Director, Healthnet: Connecticut Consumer Health Information Network; University of Connecticut Health Center; Evelyn Morgen, MLS, Associate Director, Lyman Maynard Stowe Library.
Teaching new technology to patients and health professionals. Demonstration of information about local resources. Each conference participant will receive a CD-ROM of this information.
- 12:30 L U N C H
- 1:30 Shelley Quezada, MLS, Consultant, Massachusetts Board of Library Commissioners
Importance of collaboration, grant writing, and long range planning in meeting consumer health information needs.
- 2:15 Focused discussion on additional resources / technology needs / future directions.