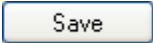
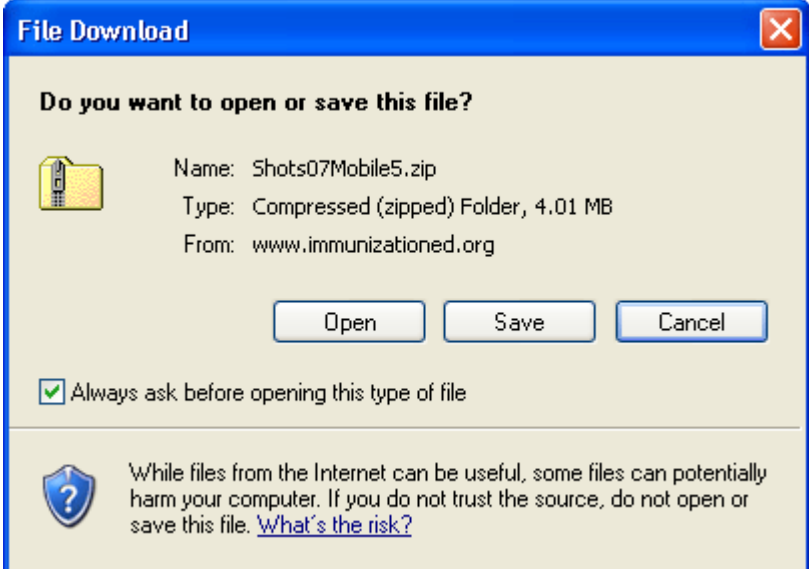


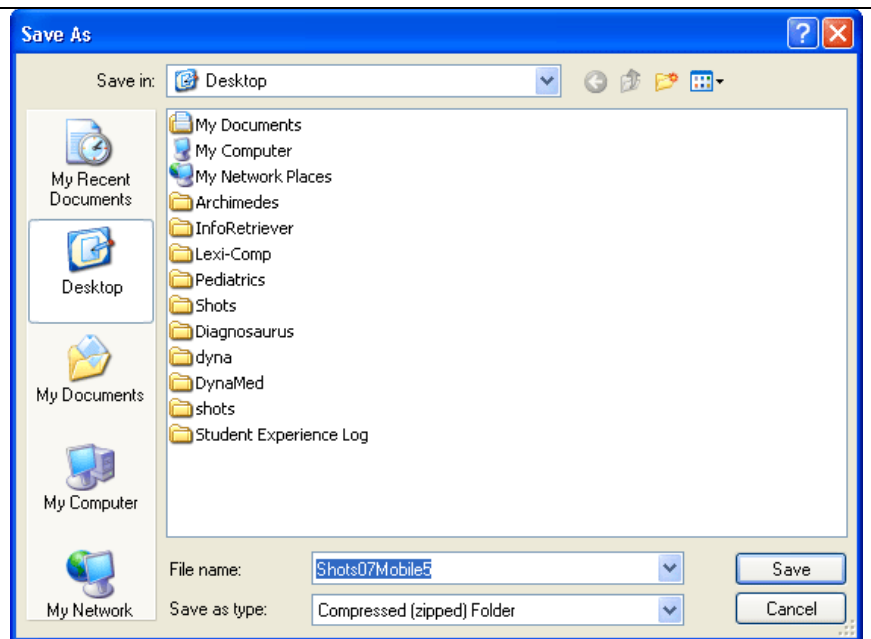
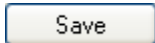
Shots Windows Mobile 5 & 6 Installation

<ul style="list-style-type: none"> Visit the CEC PDA downloads page 	http://library.uchc.edu/departm/cec/pda/pdaRec.html																								
<ul style="list-style-type: none"> Locate and click on the Shots Download link 	<table border="1" style="width: 100%; border-collapse: collapse;"> <thead> <tr> <th style="width: 20%;">PDA Application</th> <th style="width: 60%;">Application Information</th> <th style="width: 20%;">Download</th> </tr> </thead> <tbody> <tr> <td>Archimedes</td> <td>Archimedes is a Medical Calculator which includes 70 preprogrammed formulas. More information on Archimedes may be found here.</td> <td style="text-align: center;"> Download Instructions </td> </tr> <tr> <td>Diagnosaurus</td> <td>Diagnosaurus is a differential diagnosis application. More information on Diagnosaurus may be found here.</td> <td style="text-align: center;"> Download Instructions </td> </tr> <tr> <td>Dynamed</td> <td>Dynamed is a point of care reference application. (You will need to acquire a code before downloading and installing the program - UCHC staff and students only). For a code please contact Ben Smith, Nancy Mainelli, or Hongjie Wang. More information on Dynamed may be found here.</td> <td style="text-align: center;"> Download Instructions </td> </tr> <tr> <td>InfoRetriever</td> <td>InfoRetriever is a Patient-Oriented Evidence that Matters database available right at the point of care. More information on InfoRetriever may be found here.</td> <td style="text-align: center;"> Download Instructions </td> </tr> <tr> <td>Lexi-Select</td> <td>Lexi-Select is a Drug Database that includes in depth information on Drugs, Drug Interactions, Medical Calculations, etc. More information on Lexi-Select may be found here.</td> <td style="text-align: center;"> Download Instructions </td> </tr> <tr> <td style="text-align: center;">Shots</td> <td>Shots is a free handheld childhood immunization schedule database. This application also includes an adult catch-up schedule as well as information on the various vaccines. More information on Shots may be found here.</td> <td style="text-align: center;"> Download Instructions </td> </tr> <tr> <td>Student Experience Log (for UCHC students)</td> <td>The UCHC Student Experience Log allows you to record your patient interactions on your PDA and then later upload them by syncing your PDA. Note: You will need to enter your Blackboard login and password to download the installer Mobile 5 Users: Install this program first</td> <td style="text-align: center;"> Download Instructions </td> </tr> </tbody> </table>	PDA Application	Application Information	Download	Archimedes	Archimedes is a Medical Calculator which includes 70 preprogrammed formulas. More information on Archimedes may be found here .	Download Instructions	Diagnosaurus	Diagnosaurus is a differential diagnosis application. More information on Diagnosaurus may be found here .	Download Instructions	Dynamed	Dynamed is a point of care reference application. (You will need to acquire a code before downloading and installing the program - UCHC staff and students only). For a code please contact Ben Smith, Nancy Mainelli, or Hongjie Wang. More information on Dynamed may be found here .	Download Instructions	InfoRetriever	InfoRetriever is a Patient-Oriented Evidence that Matters database available right at the point of care. More information on InfoRetriever may be found here .	Download Instructions	Lexi-Select	Lexi-Select is a Drug Database that includes in depth information on Drugs, Drug Interactions, Medical Calculations, etc. More information on Lexi-Select may be found here .	Download Instructions	Shots	Shots is a free handheld childhood immunization schedule database. This application also includes an adult catch-up schedule as well as information on the various vaccines. More information on Shots may be found here .	Download Instructions	Student Experience Log (for UCHC students)	The UCHC Student Experience Log allows you to record your patient interactions on your PDA and then later upload them by syncing your PDA. Note: You will need to enter your Blackboard login and password to download the installer Mobile 5 Users: Install this program first	Download Instructions
PDA Application	Application Information	Download																							
Archimedes	Archimedes is a Medical Calculator which includes 70 preprogrammed formulas. More information on Archimedes may be found here .	Download Instructions																							
Diagnosaurus	Diagnosaurus is a differential diagnosis application. More information on Diagnosaurus may be found here .	Download Instructions																							
Dynamed	Dynamed is a point of care reference application. (You will need to acquire a code before downloading and installing the program - UCHC staff and students only). For a code please contact Ben Smith, Nancy Mainelli, or Hongjie Wang. More information on Dynamed may be found here .	Download Instructions																							
InfoRetriever	InfoRetriever is a Patient-Oriented Evidence that Matters database available right at the point of care. More information on InfoRetriever may be found here .	Download Instructions																							
Lexi-Select	Lexi-Select is a Drug Database that includes in depth information on Drugs, Drug Interactions, Medical Calculations, etc. More information on Lexi-Select may be found here .	Download Instructions																							
Shots	Shots is a free handheld childhood immunization schedule database. This application also includes an adult catch-up schedule as well as information on the various vaccines. More information on Shots may be found here .	Download Instructions																							
Student Experience Log (for UCHC students)	The UCHC Student Experience Log allows you to record your patient interactions on your PDA and then later upload them by syncing your PDA. Note: You will need to enter your Blackboard login and password to download the installer Mobile 5 Users: Install this program first	Download Instructions																							
<ul style="list-style-type: none"> Locate and click on the Shots 2007 for Pocket PC link Shots 2007 for Pocket PC 	<div style="border-left: 2px solid green; padding-left: 10px;"> <h3 style="margin: 0;">Questions about Shots?</h3> <p style="margin: 5px 0;">Shots 2007 for Palm OS - Free download -</p> <p style="margin: 5px 0;">Shots 2007 for Pocket PC - Free download</p> <p style="margin: 5px 0;">Shots 2007 On-Line - Free - contains Adult</p> <p style="margin: 5px 0;">Skyscape Software Version - Palm, Pock Adult 2007-2008 schedule coming sc</p> </div>																								
<ul style="list-style-type: none"> Locate and click on the Shots 2007 Mobile 5.0 link Shots 2007 Mobile 5.0 	<h3 style="margin: 0;">Pocket PC Mobile 5.0 Shots 2007 CAB File</h3> <p style="margin: 0;">- Shots 2007 Mobile 5.0</p>																								
<ul style="list-style-type: none"> Click the Save button  	 <p>The image shows a Windows-style 'File Download' dialog box. It asks 'Do you want to open or save this file?'. The file details are: Name: Shots07Mobile5.zip, Type: Compressed (zipped) Folder, 4.01 MB, From: www.immunizationed.org. There are 'Open', 'Save', and 'Cancel' buttons. A checkbox 'Always ask before opening this type of file' is checked. At the bottom, there is a warning icon and text: 'While files from the Internet can be useful, some files can potentially harm your computer. If you do not trust the source, do not open or save this file. What's the risk?'</p>																								

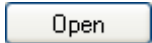
Shots Windows Mobile 5 & 6 Installation

- Decide where you'd like to save the file

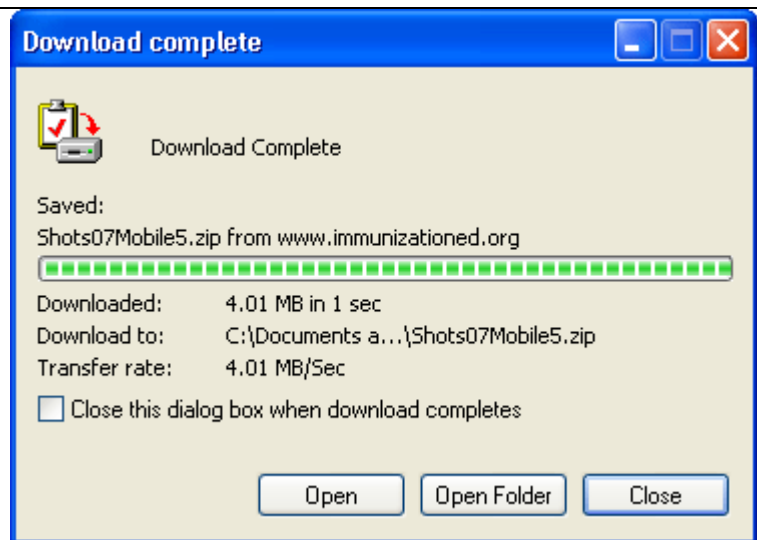
- Click the Save button



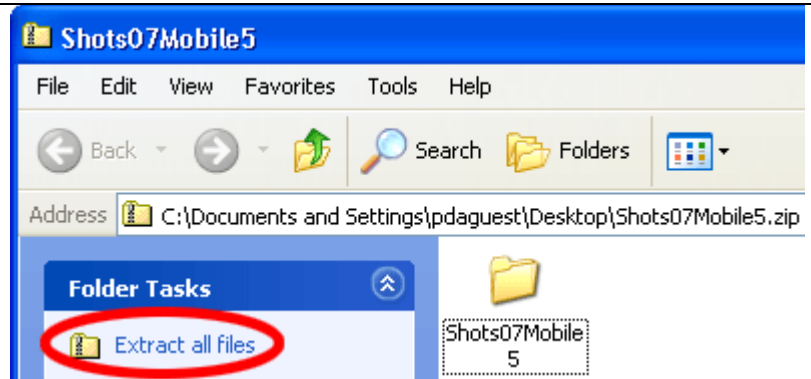
- Internet Explorer Users:
Click the Open button



Note: If you are using a browser other than Internet Explorer you will have to find the file you downloaded previously and double click it.



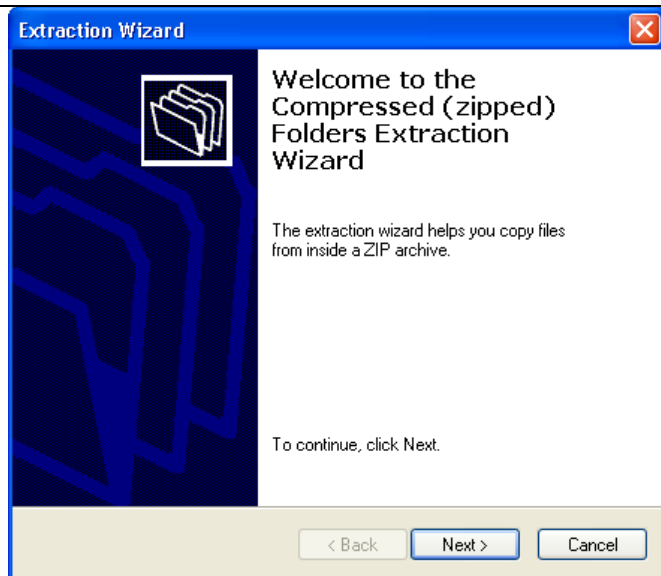
- Click on Extract all files



Shots Windows Mobile 5 & 6 Installation

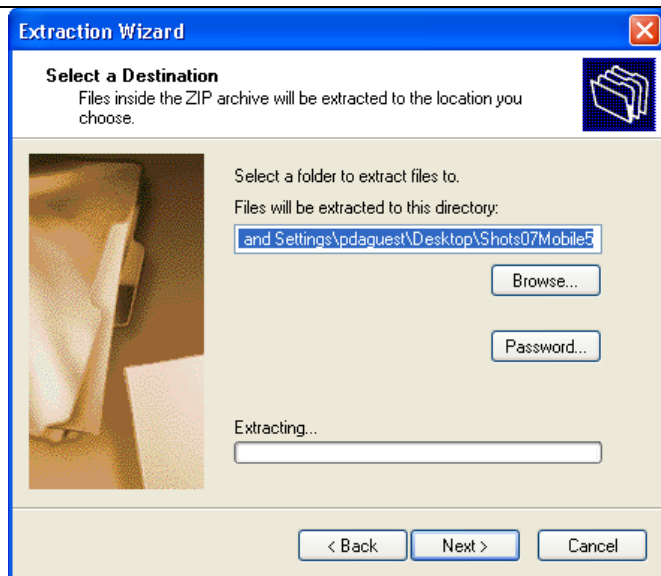
- Click the Next button

Next >



- Click the Next button

Next >

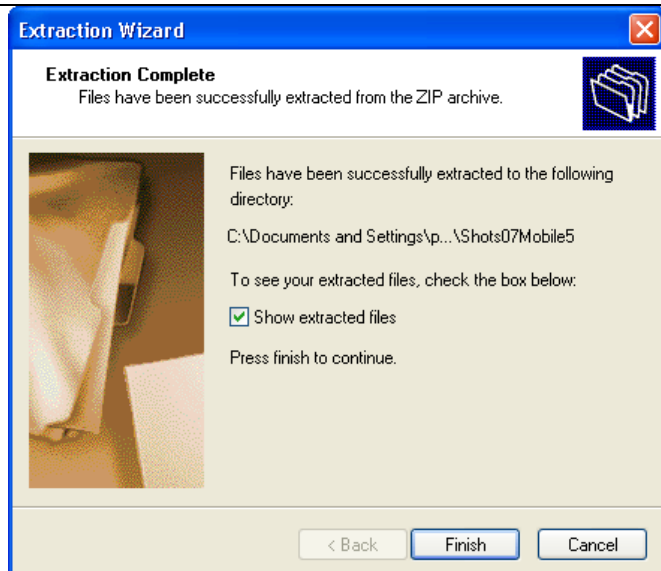


- Make sure Show extracted files is checked

Show extracted files

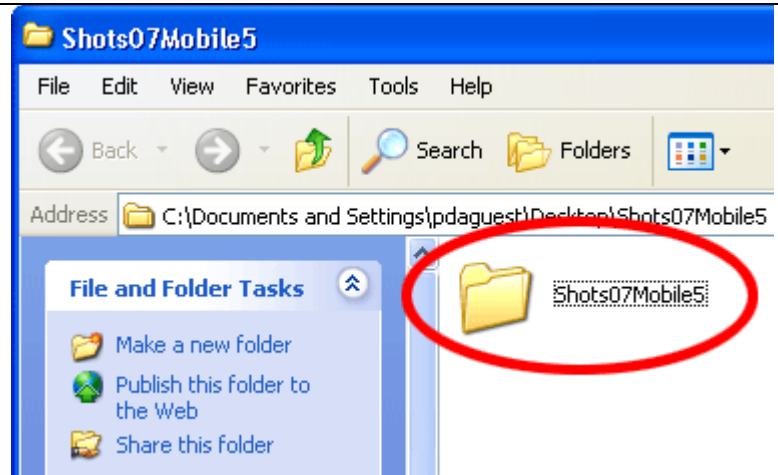
- Click the Finish button

Finish

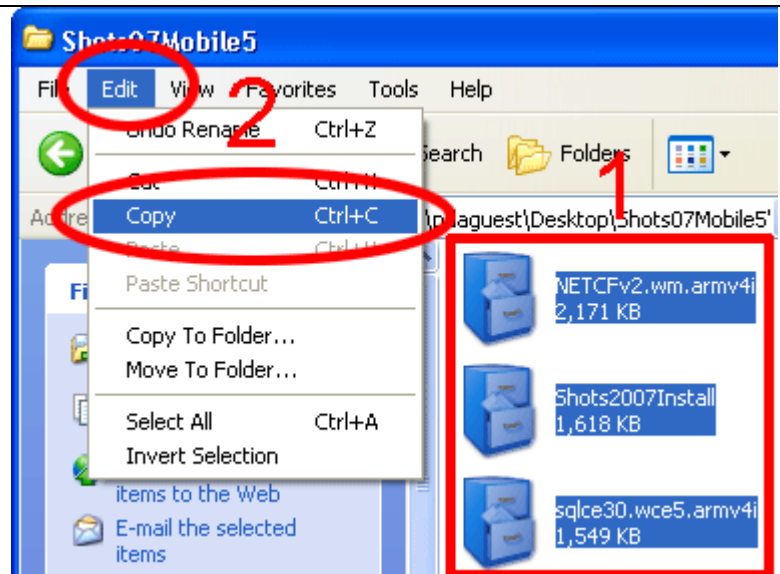


Shots Windows Mobile 5 & 6 Installation

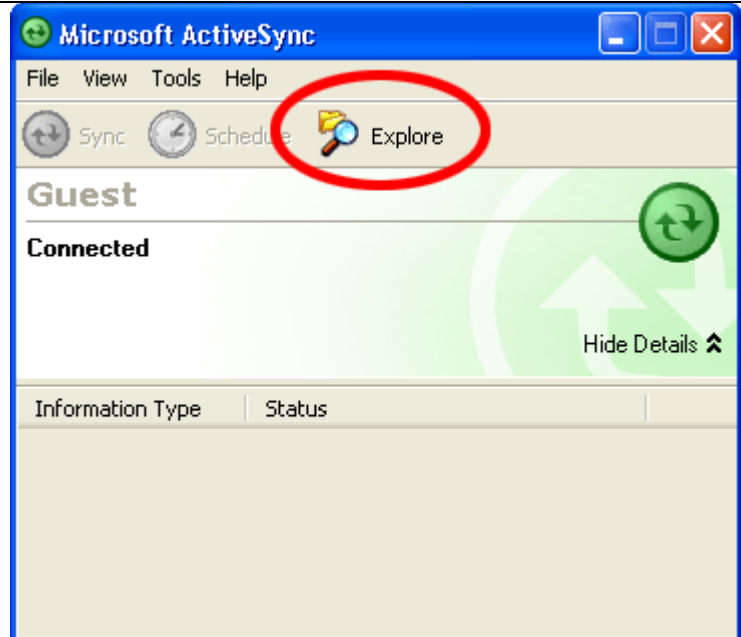
- Double click (to open) the Shots07Mobile5 folder



- Select the three files in this folder
 - NETCFv2.wm.armv4i
 - Shots2007Install
 - sqlce30.wce5.armv4i
- Go to the Edit menu and select Copy



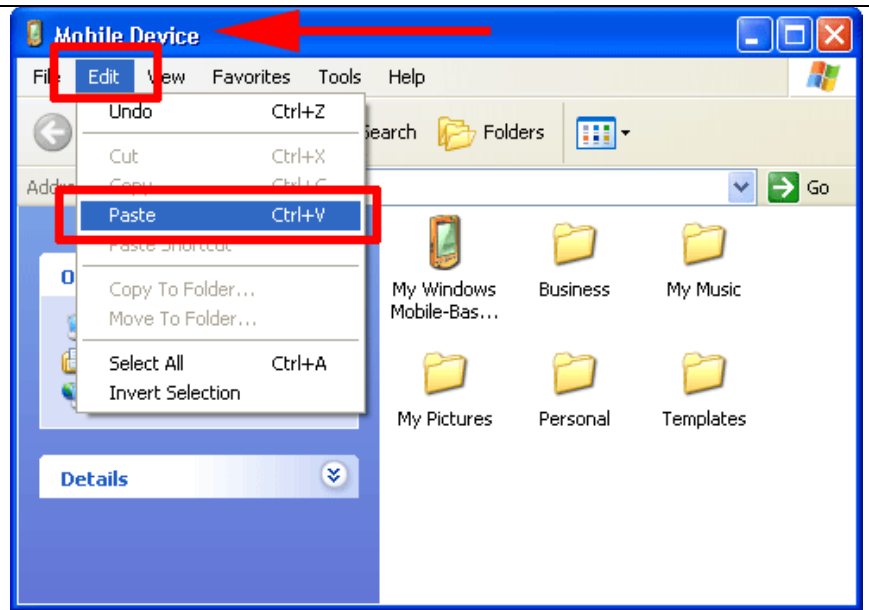
- Open up Microsoft ActiveSync
- Click on the Explore button



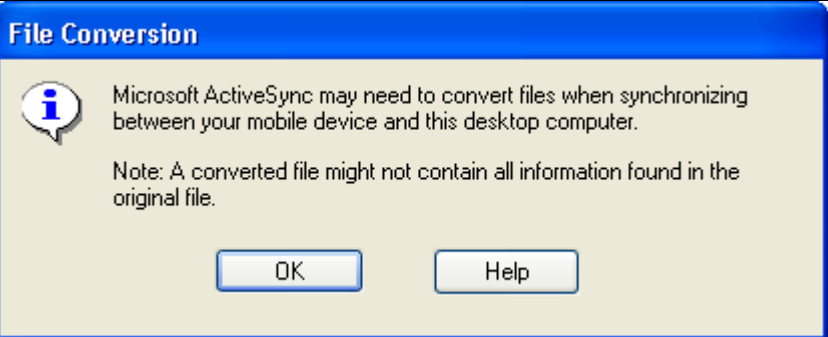
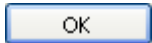
Shots Windows Mobile 5 & 6 Installation

- Go to the Edit menu and select Paste

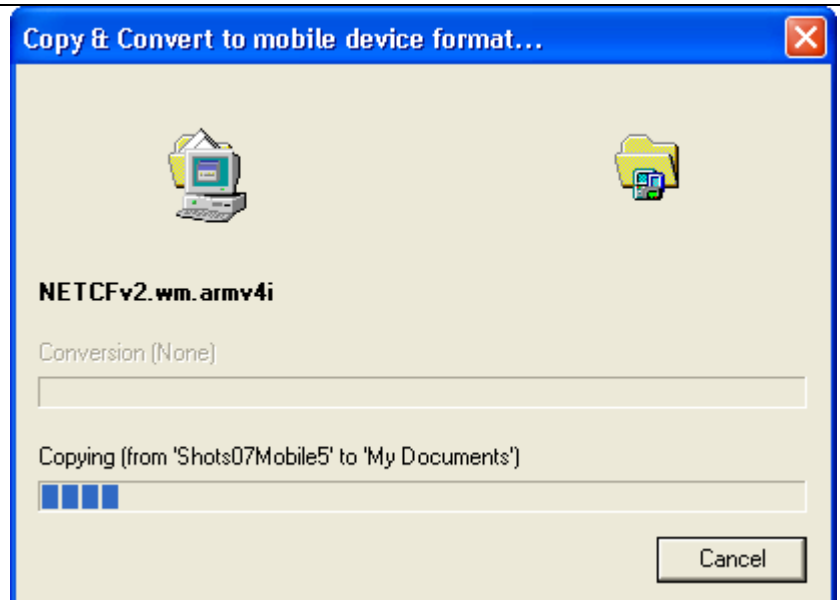
Note: This will paste the three files you copied into your PDA.



- If you receive the message on the right:
Click OK

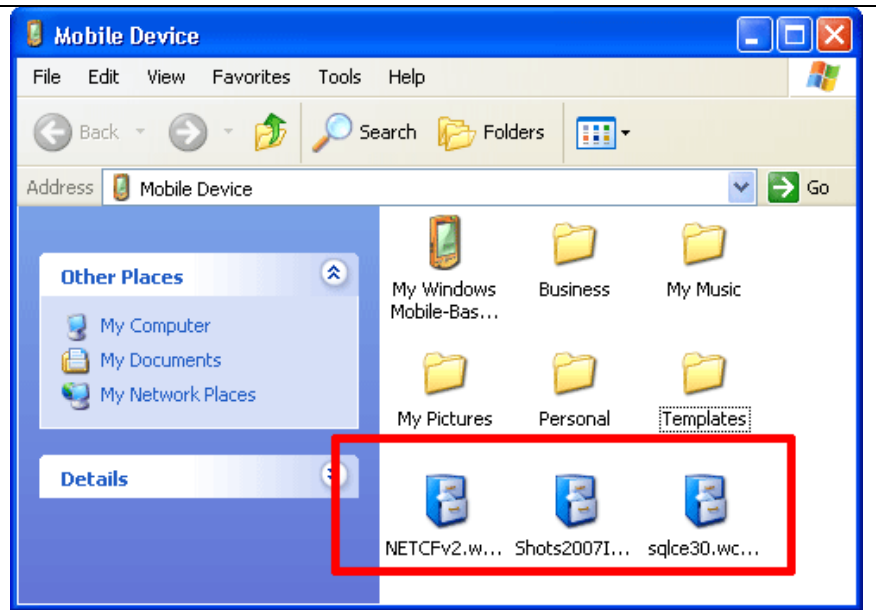


- The files will be copied and converted

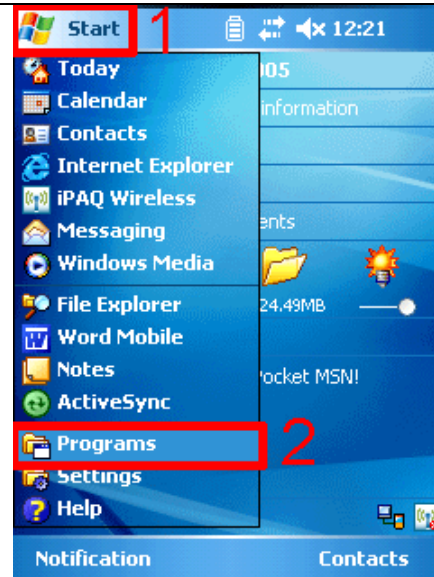


Shots Windows Mobile 5 & 6 Installation

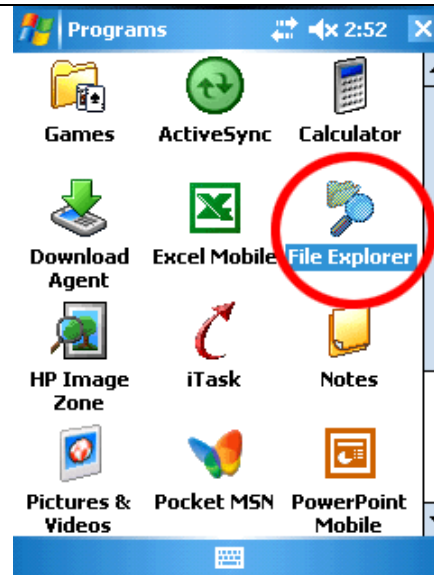
- The files now exist on your PDA



- Turn to your PDA
- Tap the Start menu and select Programs

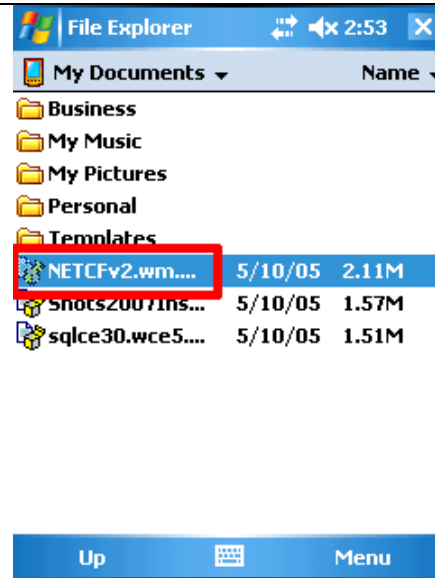


- Tap File Explorer

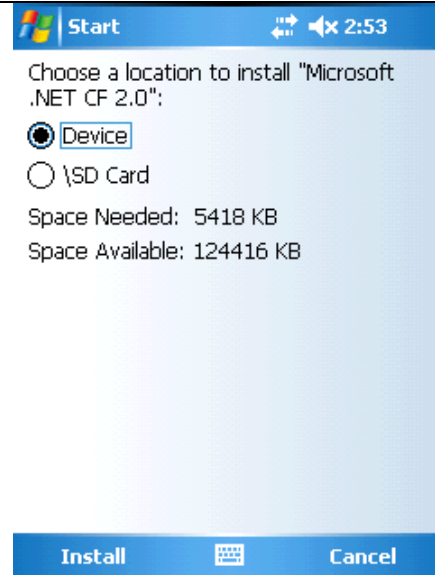


Shots Windows Mobile 5 & 6 Installation

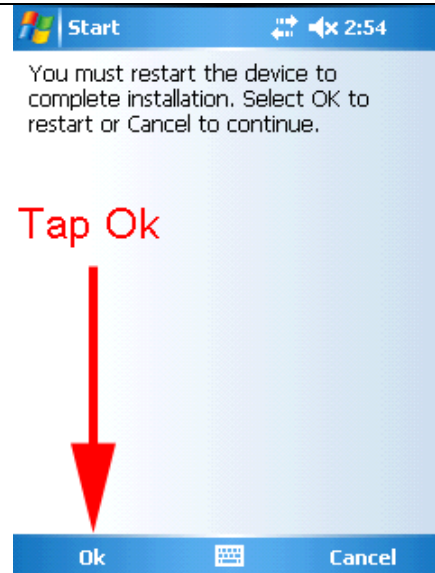
- Locate and tap:
NETCFv2.wm.armv4i



- Install to the Device memory
 Device
- Note:** This must be installed to your main (device) memory or else it will not function properly.

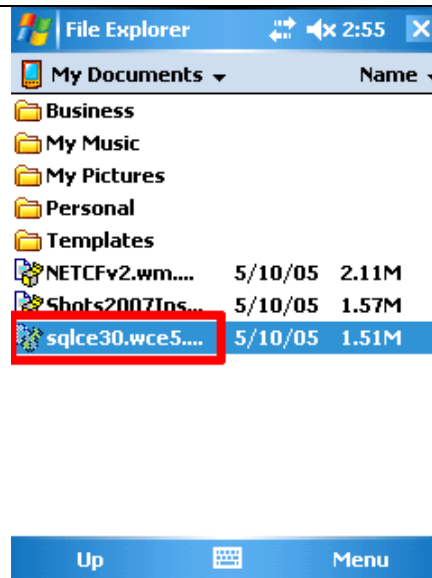


- Restart your device:
Tap Ok
- Your device will restart



Shots Windows Mobile 5 & 6 Installation

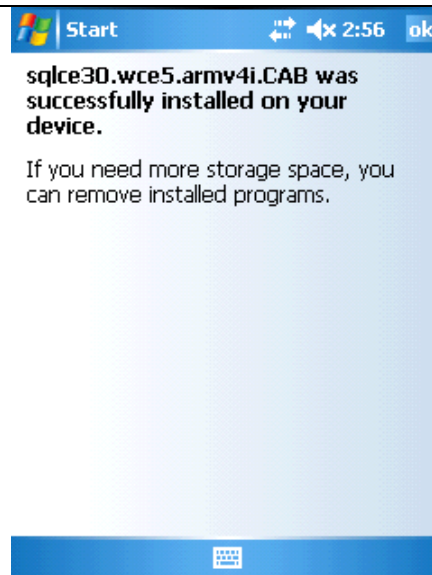
- Go back into File Explorer (Start menu – Programs – File Explorer)
- Locate & tap: sqlce30.wce5.armv4i



- Install to the Device memory
 Device
- Note:** This must be installed to your main (device) memory or else it will not function properly.

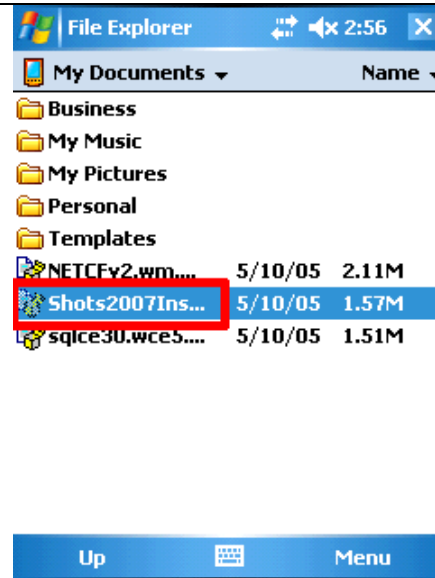


- When the installation completes:
Tap ok
- Note:** If the PDA screen reads that the installation was **unsuccessful** you will need to try installing the program again. Check to make sure that you have enough memory in the location that you are trying to install sqlce.



Shots Windows Mobile 5 & 6 Installation

- Locate & tap:
Shots2007Install



- Select where to install Shots

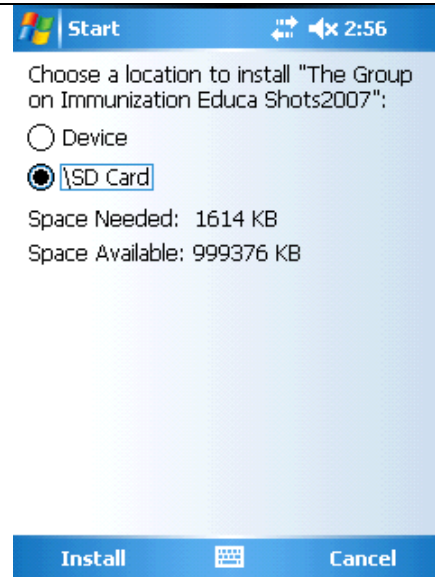
Recommended: SD Card

- Device
 \SD Card

Device: All of the files will be installed to your PDA's main memory

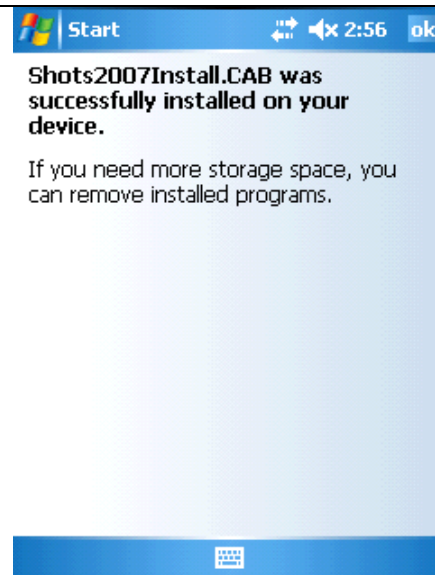
SD Card: Most of the files will be installed to your SD Card

- Tap Install
Install



- When the installation completes:
Tap ok
ok

Note: If the PDA screen reads that the installation was **unsuccessful** you will need to try installing the program again. Check to make sure that you have enough memory in the location that you are trying to install Shots.

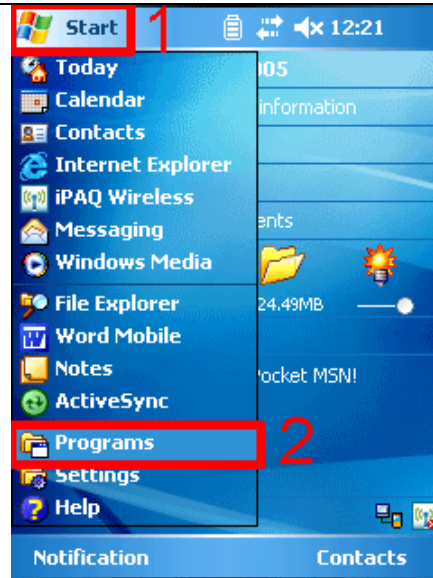


Shots Windows Mobile 5 & 6 Installation

- Make sure Shots is functioning

Tap your PDA Start Menu

Tap Programs



- Tap Shots



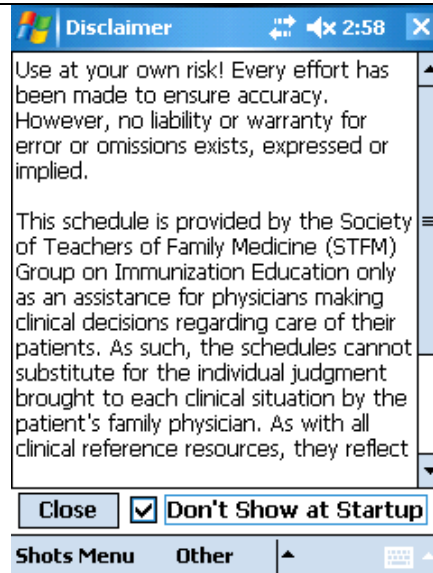
- Read through the disclaimer

- Check the Don't Show at Startup checkbox

Don't Show at Startup

- Tap Close

Close



Shots Windows Mobile 5 & 6 Installation

- Try out Shots to make sure it is working properly.

The screenshot shows the 'Child Schedule' application window. The title bar includes the Windows logo, the text 'Child Schedule', and system icons for connectivity, volume, and time (2:58). The main content is a grid with 'Age' on the vertical axis and 'MONTHS' and 'YEARS' on the horizontal axis. The 'MONTHS' column is divided into '1-2', '4-6', '12-15', and '18-23'. The 'YEARS' column is divided into '2-3' and '4-6'. The 'Age' rows include HepB, Rota, DTaP, Hib, PCV, IPV, Flu, MMR, Var, HepA, and Men. Colored cells in the grid indicate when a vaccine should be administered. For example, HepB is given at birth, 1-2 months, 4-6 months, and 12-15 months, with a 'HepB Series' label in the 2-3 year range. DTaP is given at 2-3, 4-6, and 12-15 months. Hib is given at 2-3 months and 12-15 months. PCV is given at 2-3 months and 12-15 months. IPV is given at 12-15 months and 4-6 years. Flu is given yearly starting at 12-15 months. MMR is given at 12-15 months and 4-6 years. Var is given at 12-15 months and 4-6 years. HepA (2 doses) is given at 12-15 months and 4-6 years. Men is given at 4-6 years. At the bottom, there are tabs for 'Child', 'Adole', 'Adult', 'Med', and 'Catch-Up', and a 'Shots Menu' button.

Age	MONTHS				YEARS	
	Birth	1-2	4-6	12-15	18-23	2-3 / 4-6
HepB	Yellow	HepB	*	HepB		HepB Series
Rota		Yellow	Yellow			
DTaP		Yellow	Yellow	DTaP		DTaP
Hib		Yellow	*	Hib		Hib
PCV		Yellow	Yellow	PCV		PPV
IPV		Yellow		IPV		IPV
Flu				Influenza (Yearly)		
MMR				MMR		MMR
Var				Var		Var
HepA				HepA (2 doses)		HepA Ser.
Men						MPSV4

Images contained in these instructions are copyright Microsoft Corporation, DanielWeaver, and Lyman Maynard Stowe Library