

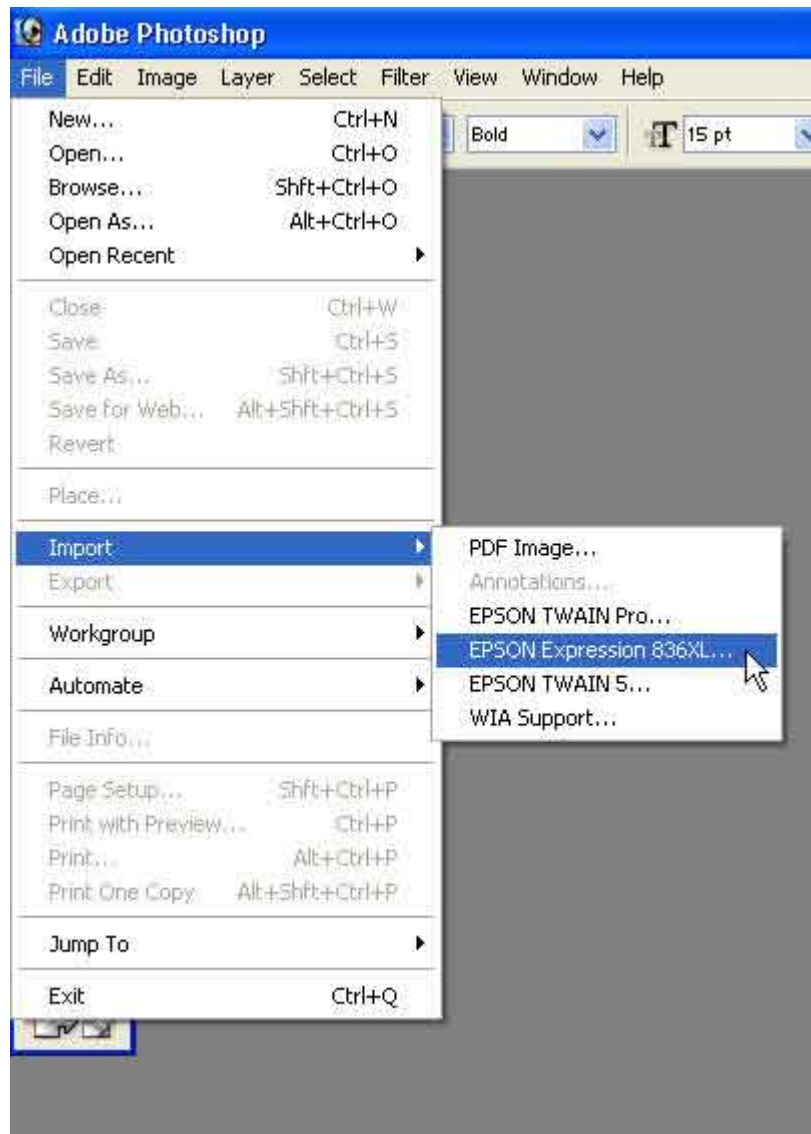
PC Home Mode Scanning

1.) Make sure to turn on the Scanner before turning on the Computer

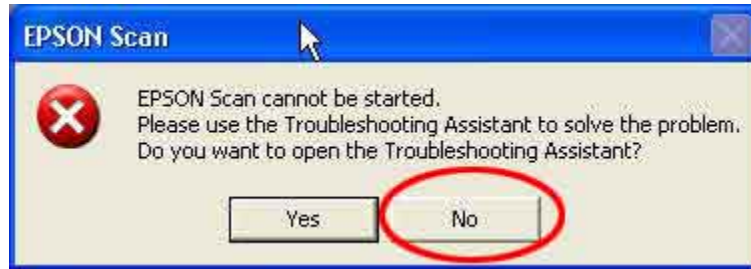
2.) Open Adobe Photoshop (located on the Desktop)



3.) Under **File** select **Import** and then **Epson Expression 836XL**



4a.) If you receive this message:

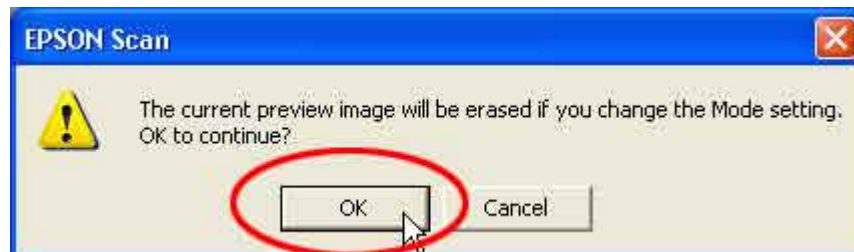


- Click on **No**
- Close Photoshop
- Press the **Reset** button on the front of the scanner
- Restart the Computer
- Start over from Step 2

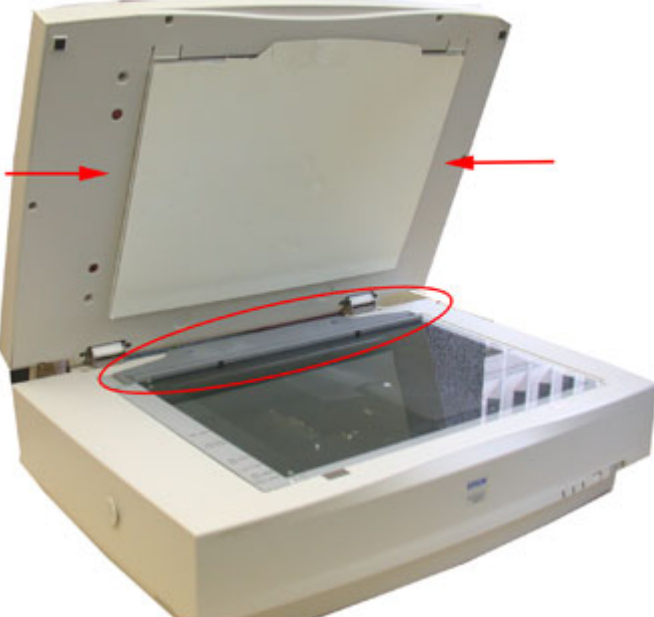
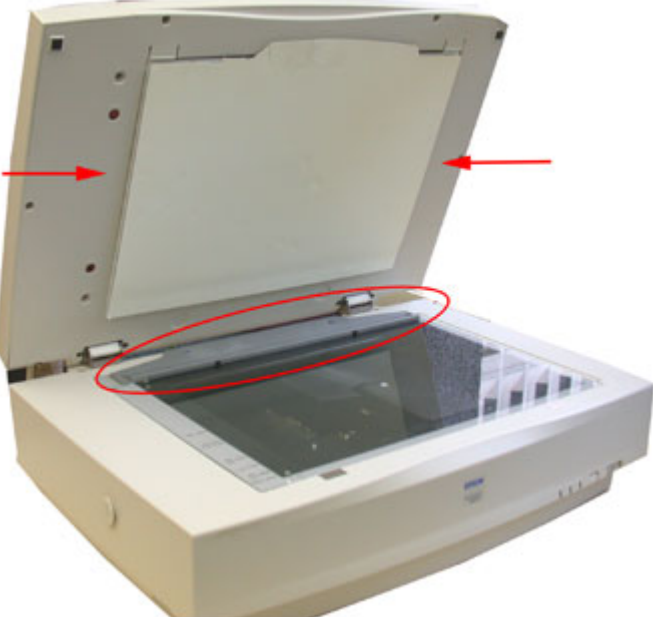
4b.) If you do not receive the error message; the **Epson Scan Utility** will open

5.) Under **Mode** select **Home Mode**

- If you receive this message, click **Ok**



Reflective Vs. Transparent Scanning

Reflective Document	Transparent Document
Reflective Documents include: Pictures, Articles, Text, etc.	Reflective Documents include: X-rays, Film, Transparencies, etc.
<p>When Scanning:</p> <p>Please make sure the white mat (located under the lid of the scanner) is attached and the gray scanning guide (sitting on the document table of the scanner) has been removed</p>	<p>When Scanning:</p> <p>Please make sure the white mat (located under the lid of the scanner) has been removed from the scanner and the gray scanning guide (sitting on the document table of the scanner) is attached</p>
 A photograph of a scanner with its lid open. A white mat is attached to the underside of the lid. A red oval highlights the area where the gray scanning guide has been removed from the document table. Two red arrows point to the white mat on the lid.	 A photograph of a scanner with its lid open. The white mat has been removed from the underside of the lid. A red oval highlights the area where the gray scanning guide is attached to the document table. Two red arrows point to the white mat on the lid.

6.) Under **Document Type** select the type of Document you are scanning

- Photo
- Positive Film
- Color Negative Film
- Black & White Negative Film
- Illustration
- Magazine
- Newspaper
- Text/Line Art

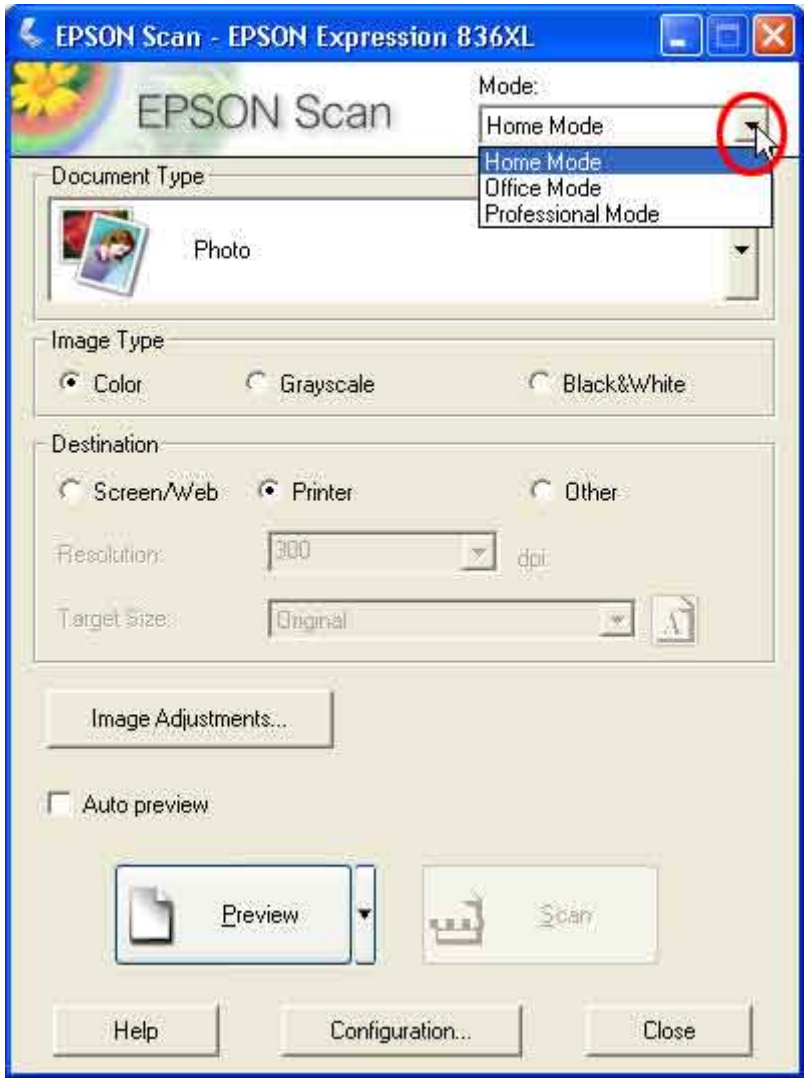
7.) Under **Image Type** select the color of the Document

- Color
- Grayscale
- Black & White

8.) Under **Destination** select how you or anyone else will view the document

- Screen/Web - if it will only be viewed on a computer screen
- Printer - if the document will be printed out
- Other - set your own resolution level
- Resolution - you will be able to set this if **Other** is selected above
- Target Size - this will become available after you preview the document

9.) Click on **Image Adjustments** if you want make adjustments (otherwise skip to step 11)



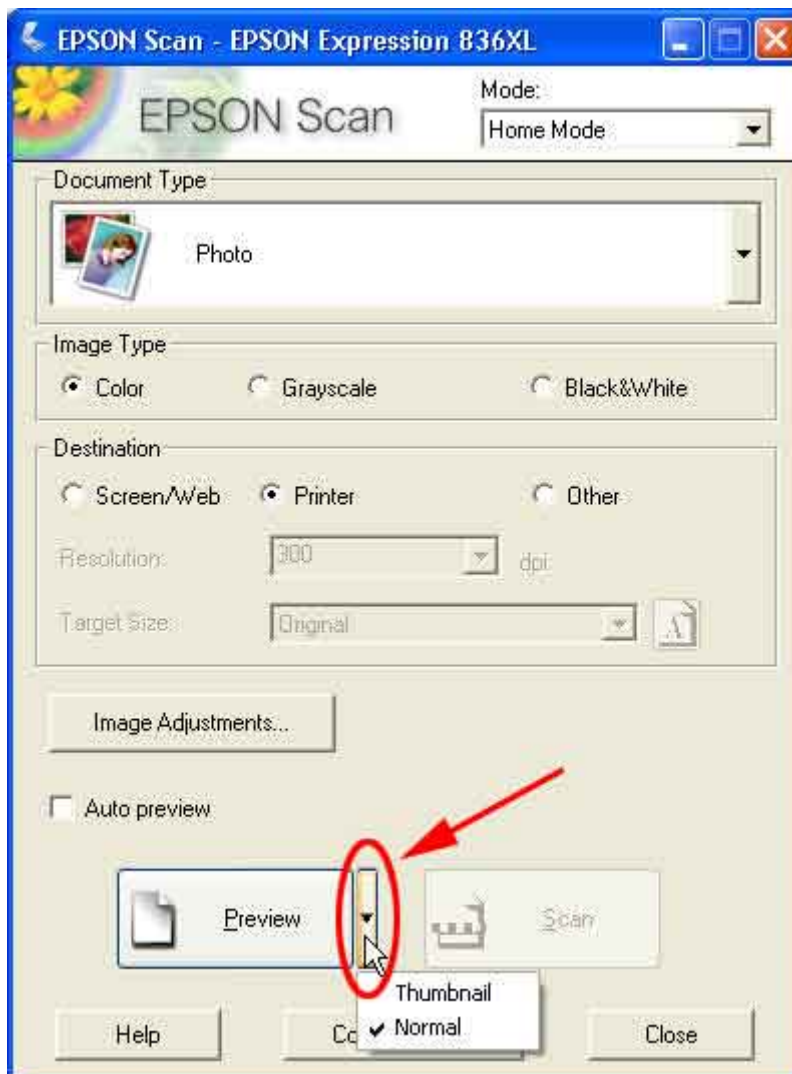
10.) **Image Adjustments** (if selected in the previous step, otherwise skip to step 11)

- Brightness - Color or Grayscale scanning
- Contrast - Color or Grayscale scanning
- Threshold - Black & White scanning
- Descreening Filter - To Learn More See The Descreening Page



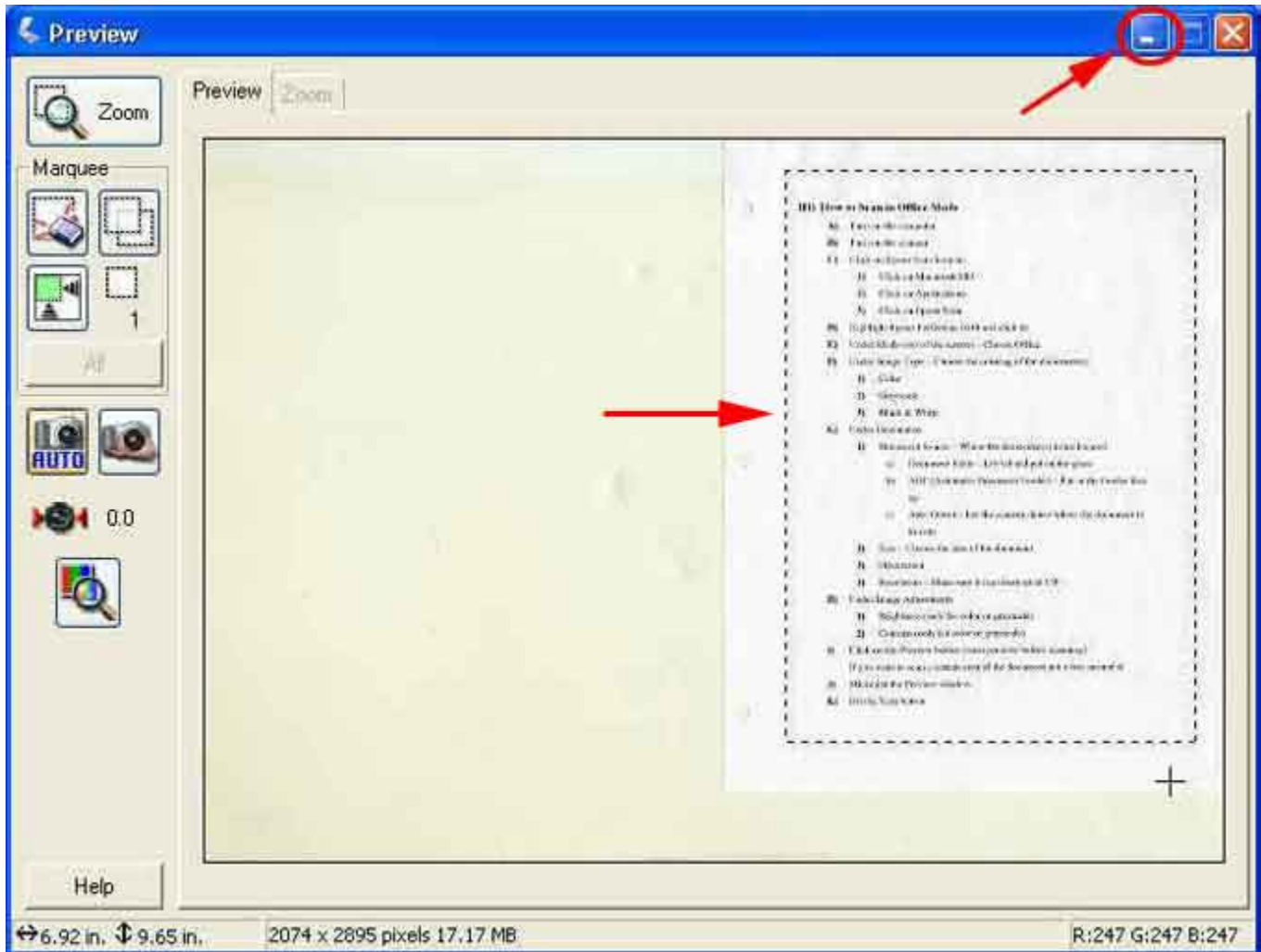
11.) Make sure the **Preview** is set to **Normal** (triangle next to the **Preview** button)

12.) Click on the **Preview** button

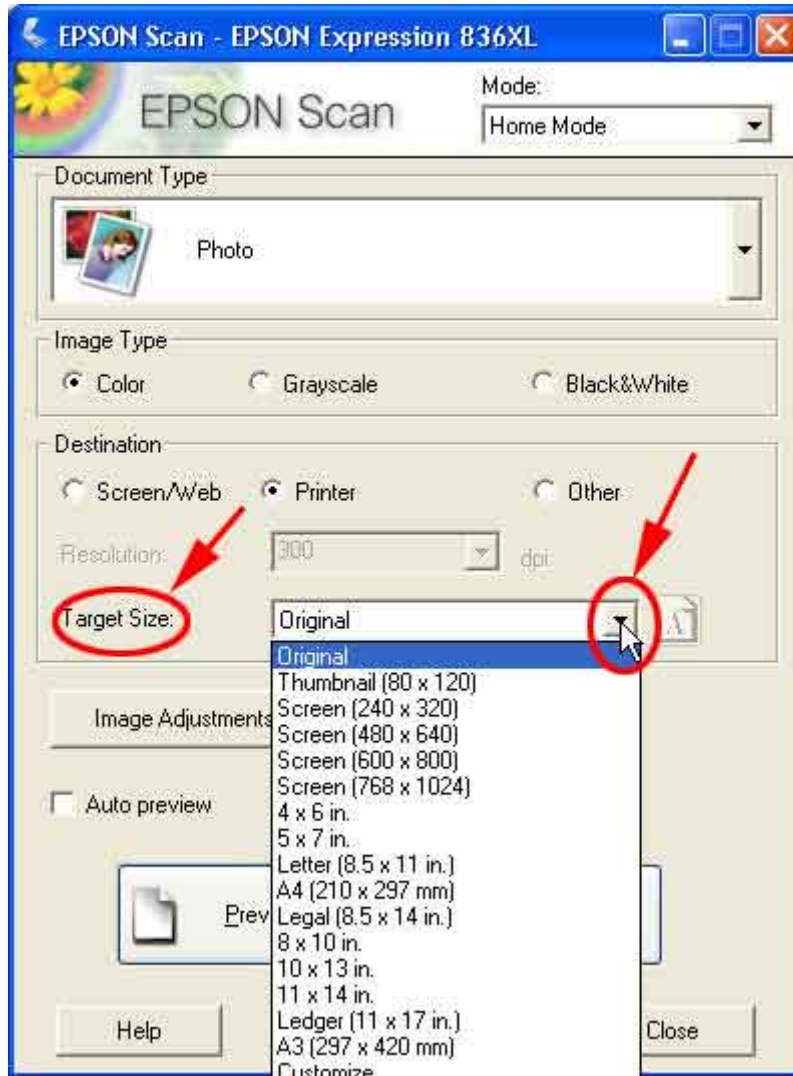


13.) A Preview of the document will open, if you want to highlight a certain area to scan, make a box around the area you want to focus on

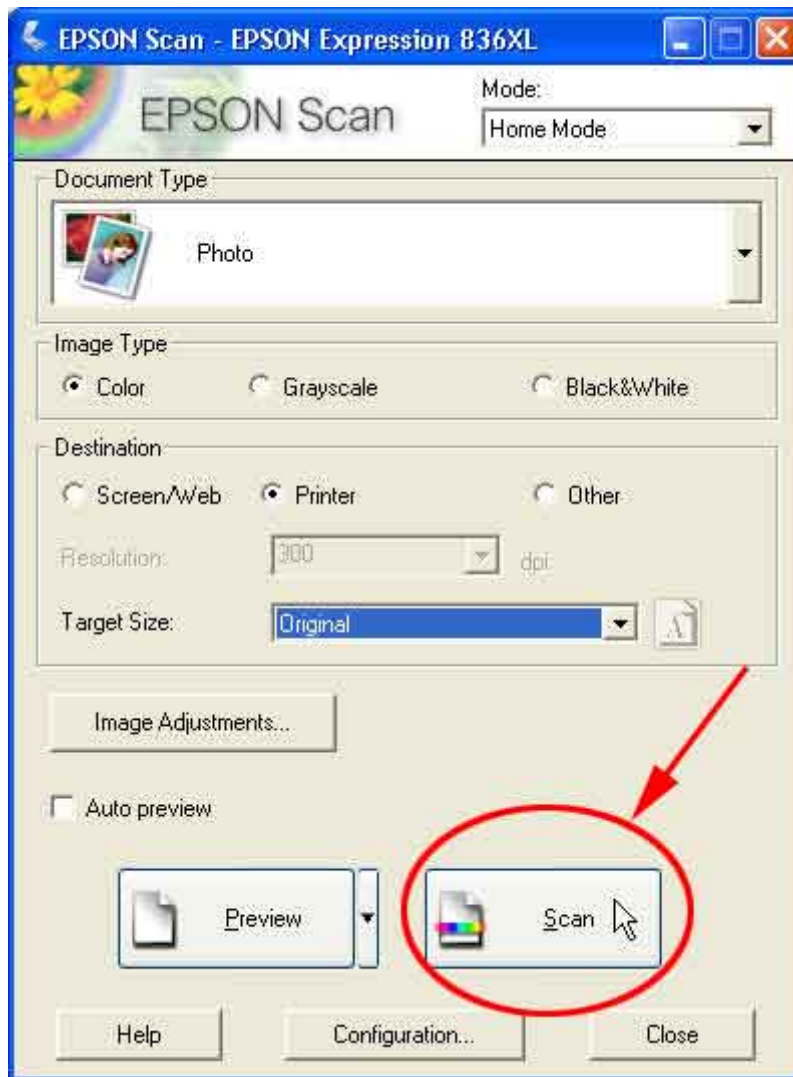
14.) Minimize the Preview Window



15.) If you want to specify the size of the document after it is scanned - Under **Target Size** - Change to the desired size (otherwise skip to step 16)

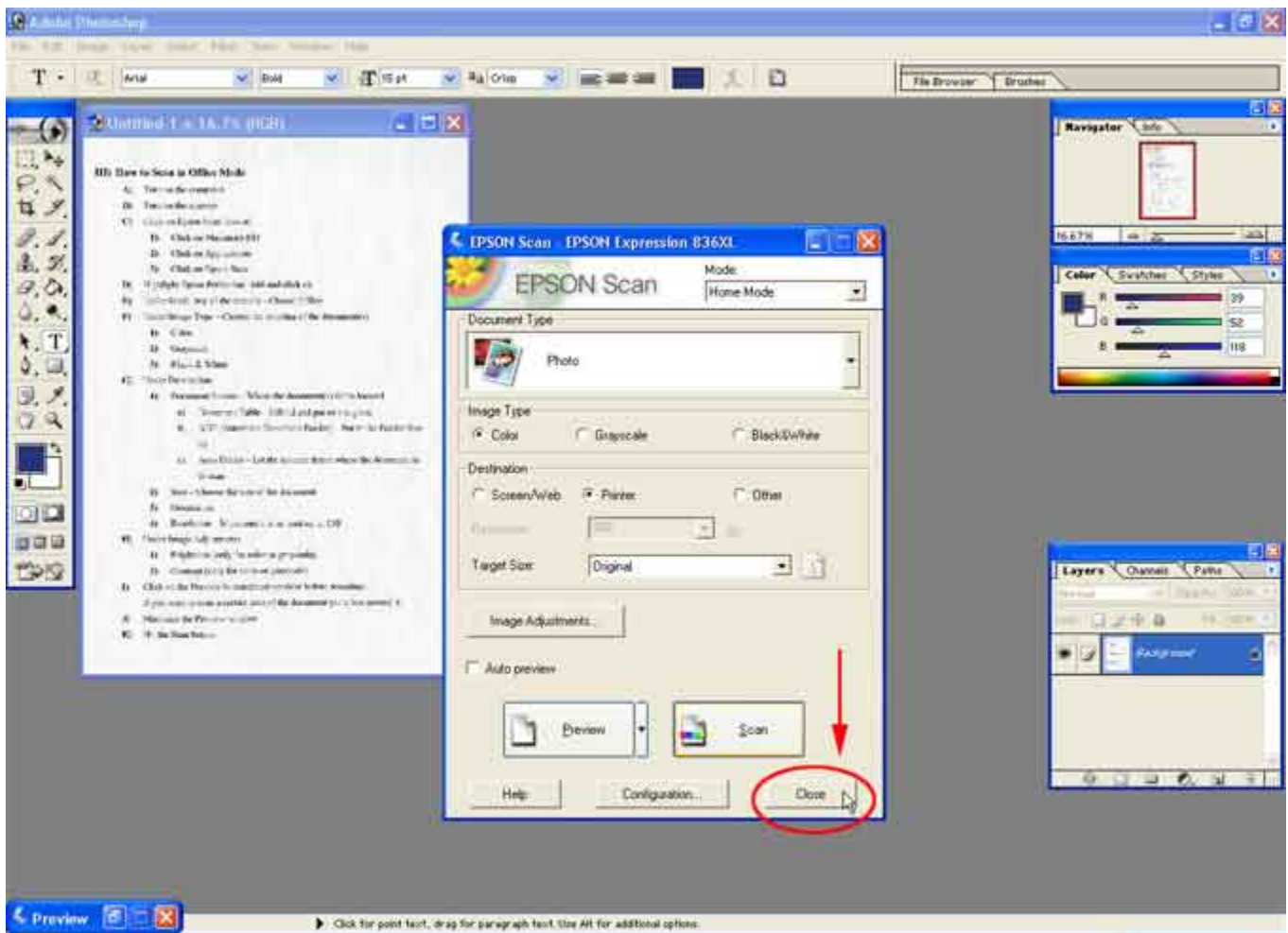


16.) Click on the **Scan** button



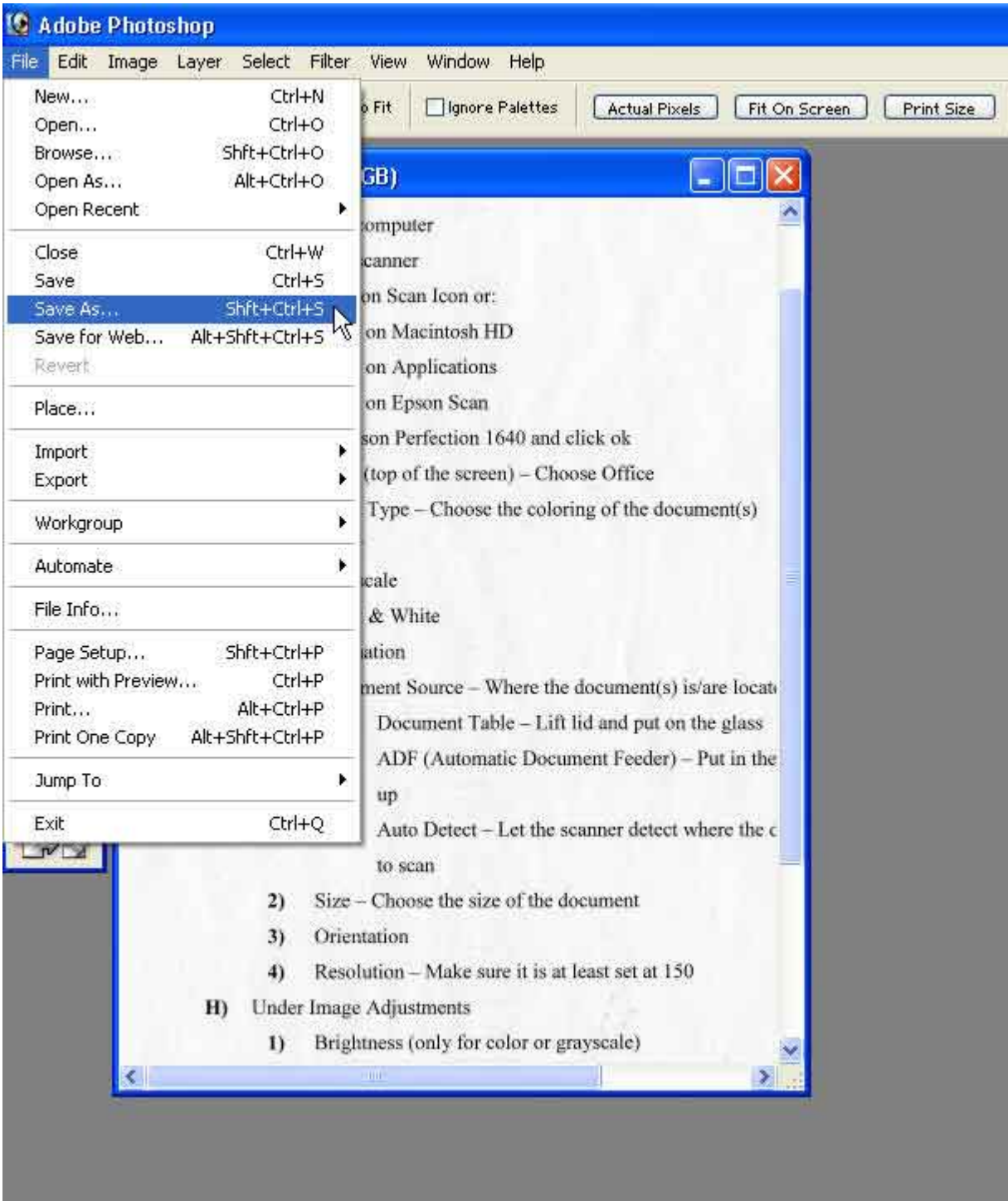
17.) Your scanned document will appear in Photoshop - if you like the way it looks you can save it; if not re-scan your document (return to step 6)

18.) Close the Scan window (if you have more documents to scan, it's best to scan them all first and then close the Scan window; if so return to step 6)



19.) Make any desired changes to the image

20.) To save the document - Click on **File** and select **Save As**



21.) In the Save As window that opens up:

- **Save in:** Where you want to save the file
- **File name:** Name the file
- **Format:** Select the type of file you'd like to save the document as

22.) Click on **Save**

