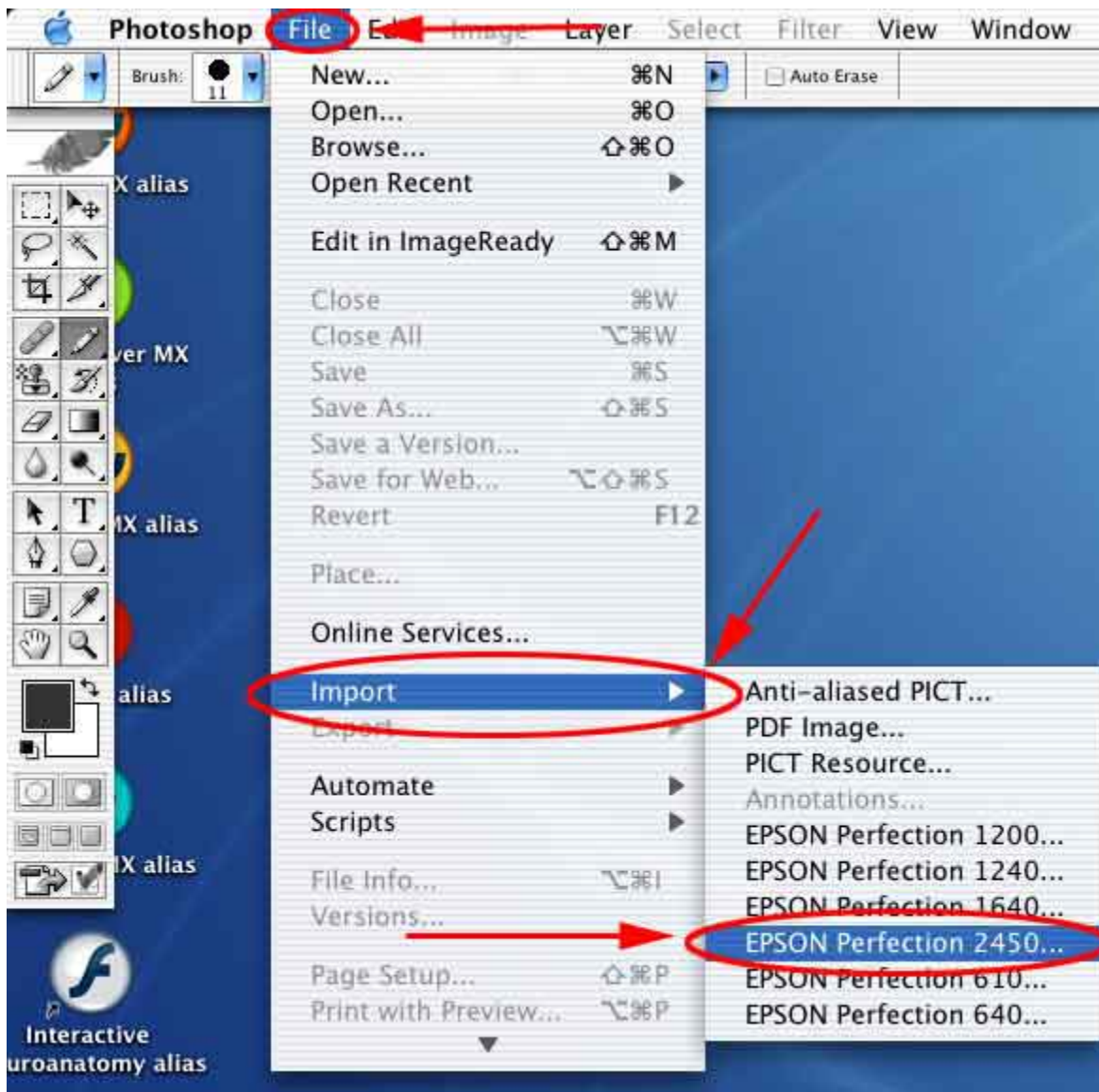


MAC Professional Mode Scanning

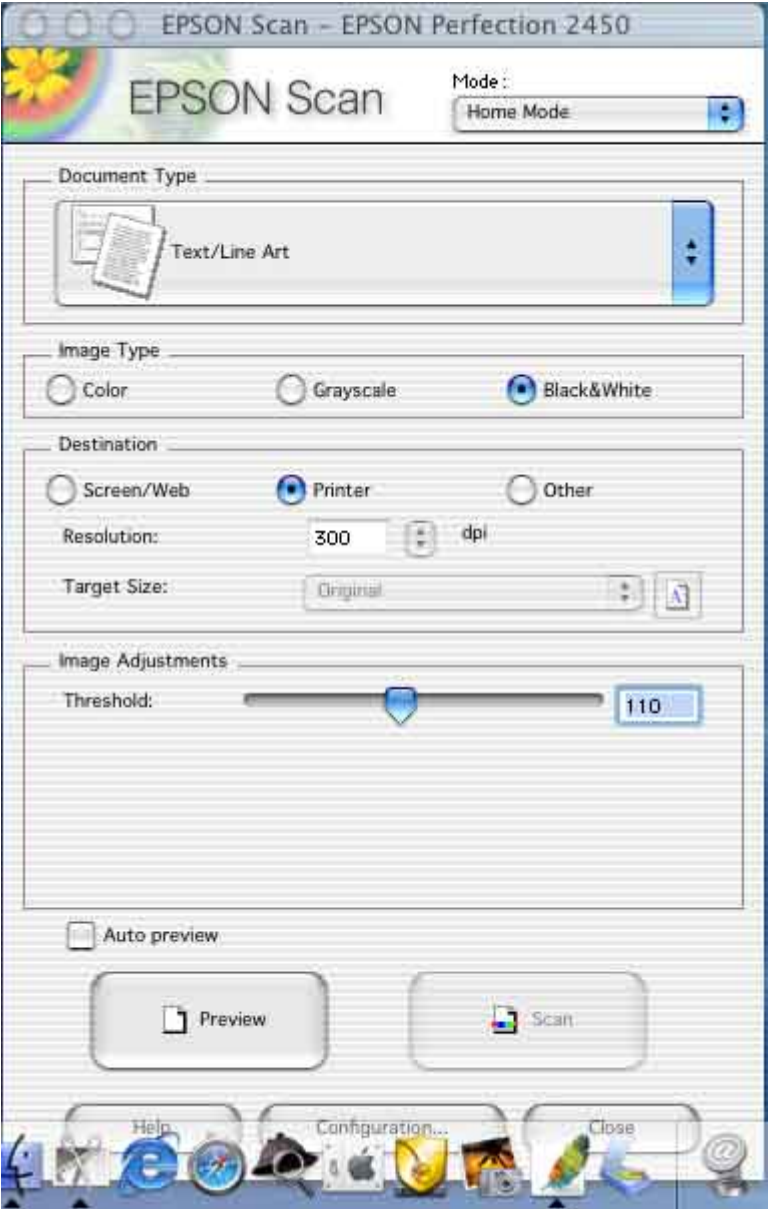
- 1.) Make sure the Scanner and Computer are turned on
- 2.) Open Adobe Photoshop (located in the Dock)



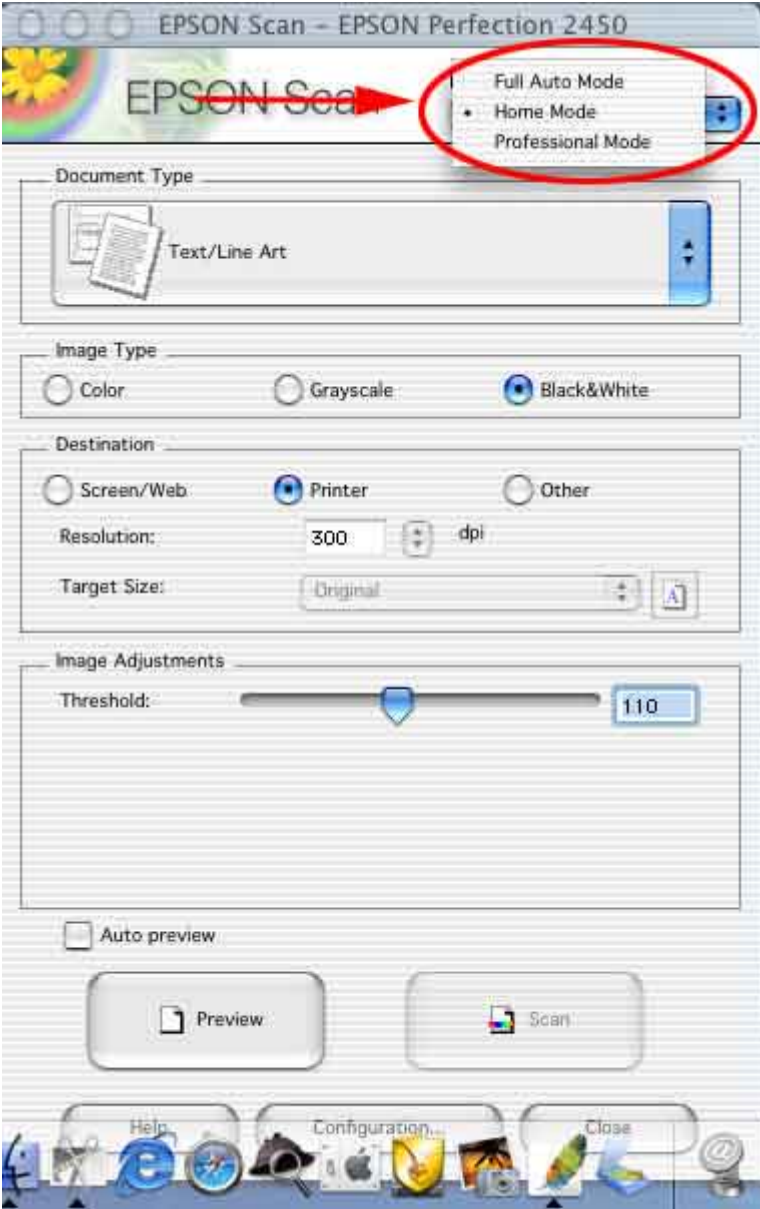
3.) Under **File** select **Import** and then **Epson Perfection 2450**



4.) The Epson Scan Utility window will open



5.) Under **Mode** select **Professional Mode**

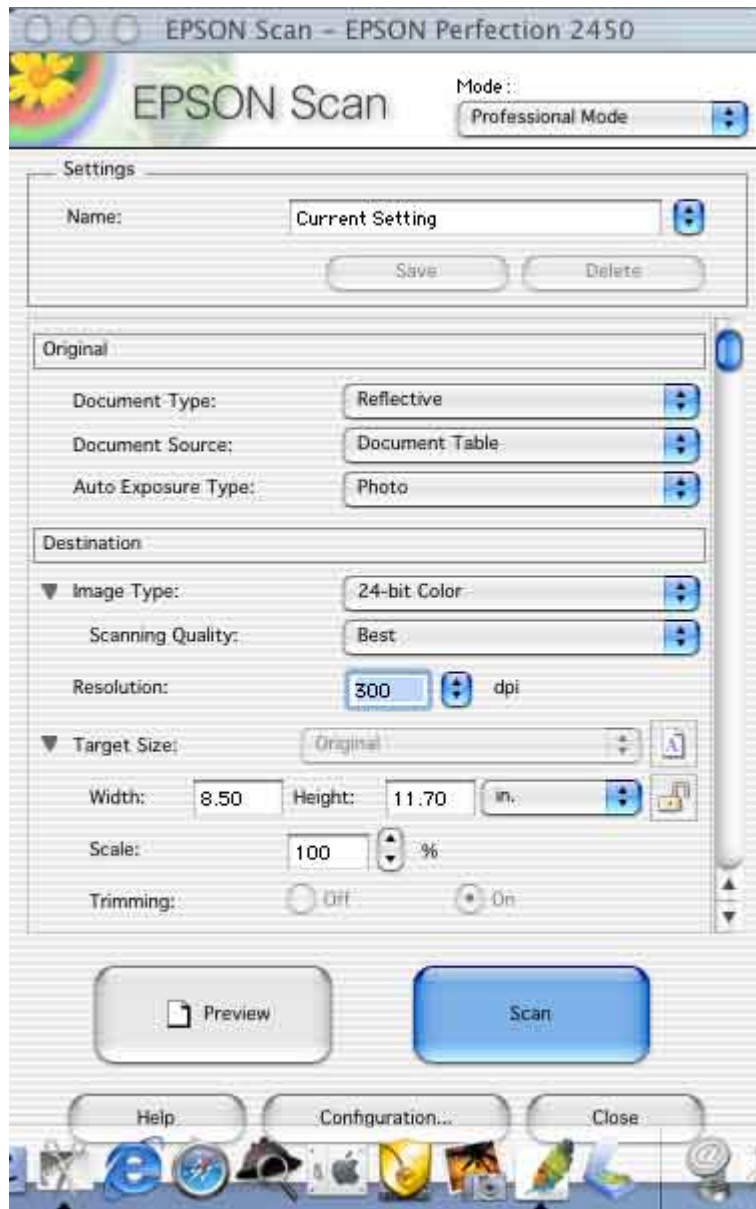


6.) Under **Original**

- Document Type - **Reflective** (Please use the PC Scanner for Film Scanning)
- Document Source - **Document Table**
- Auto Exposure Type - **Photo** or **Document**

7.) Under **Destination**

- Image Type - Select Color, Grayscale, or Black & White
- Resolution - Set Resolution
- Target Size - If you want to set the size of the document

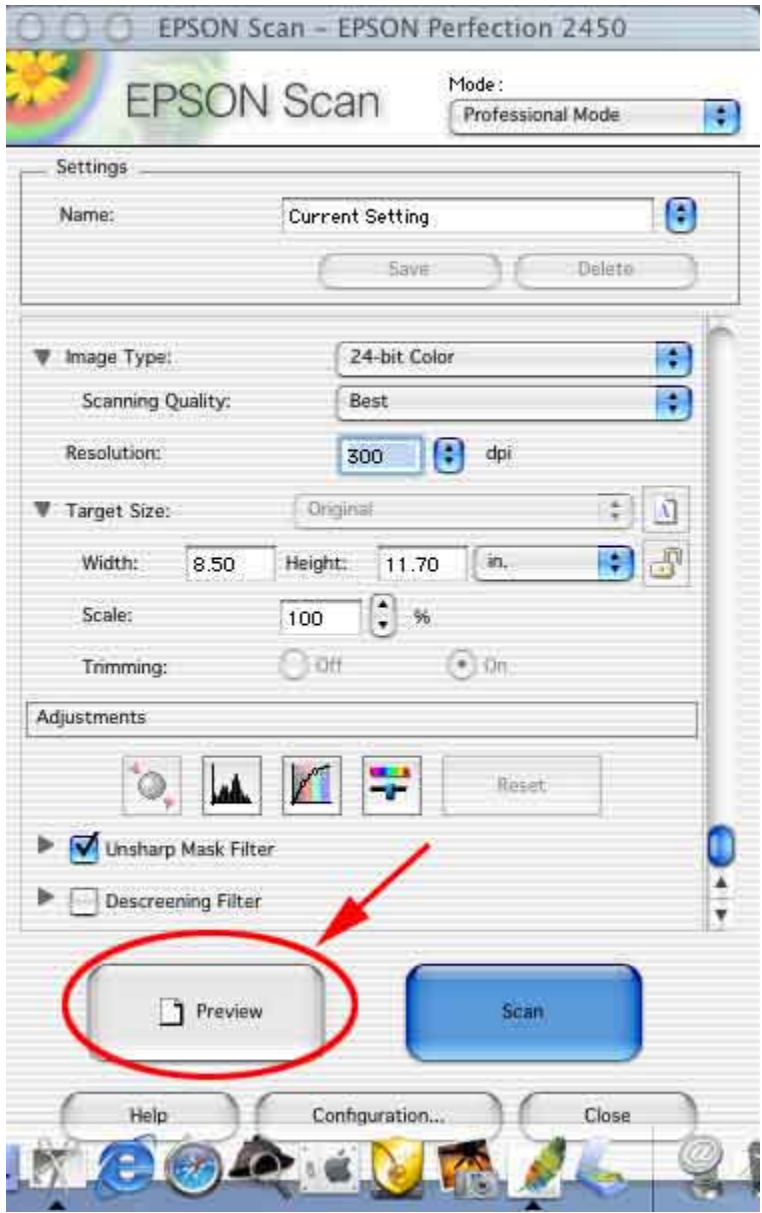


8.) Under **Adjustments**

- **Brightness**
- **Contrast**
- **Saturation**
- **Color Balance**

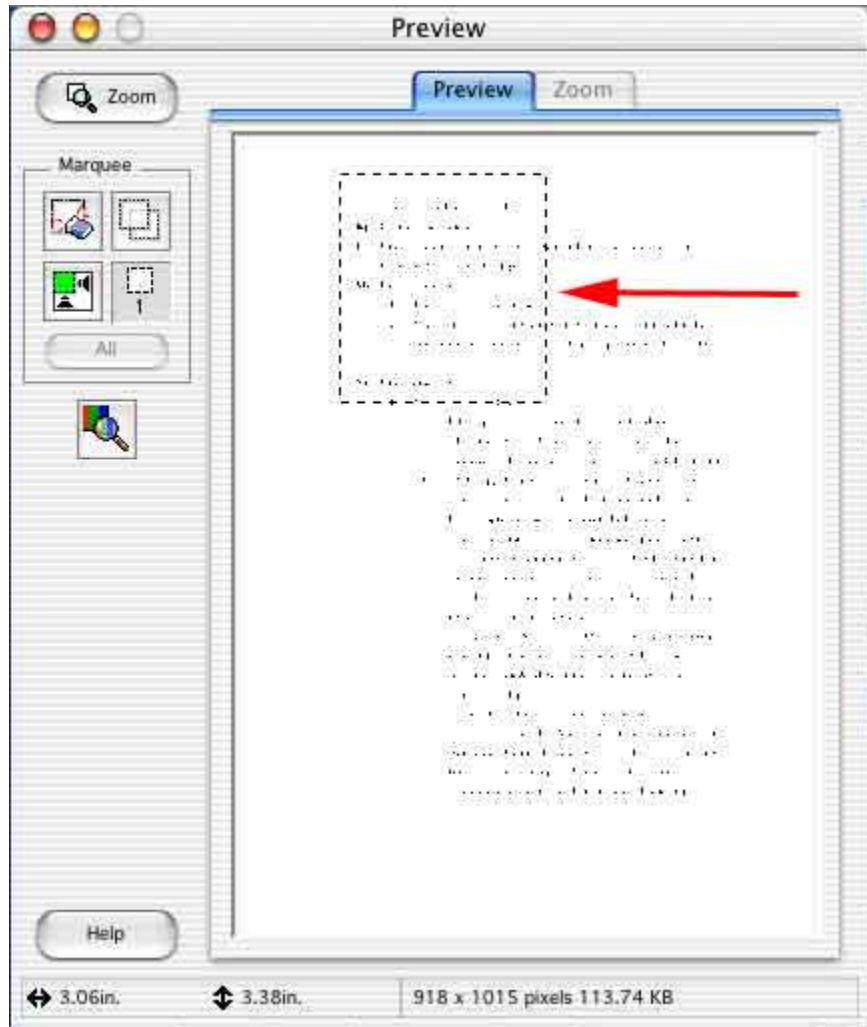
- **Unsharp Mask Filter - To Learn More See the Unsharp Mask Page**
- **Descreening Filter - To Learn More See the Descreening Page**

9.) Click on the **Preview** button

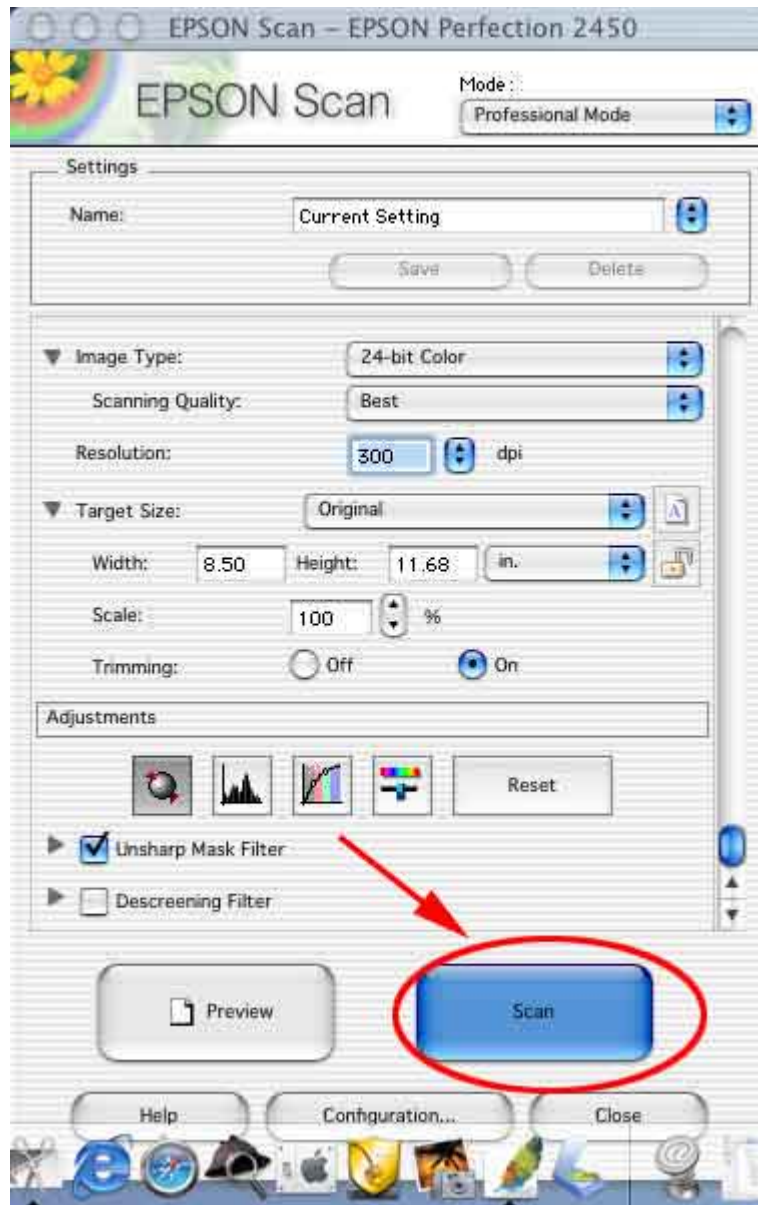


10.) If you want to highlight a certain area to be scanned, put a box around the area you'd like to scan

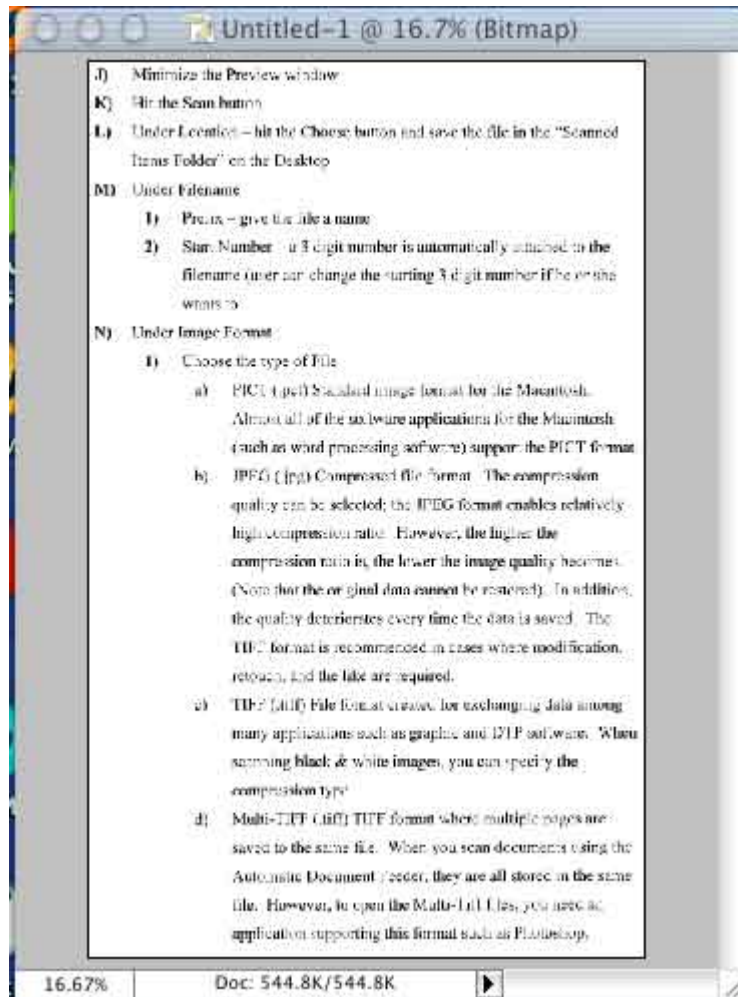
11.) Minimize the Preview Window (yellow button at the top of the window)



12.) Click on the **Scan** button

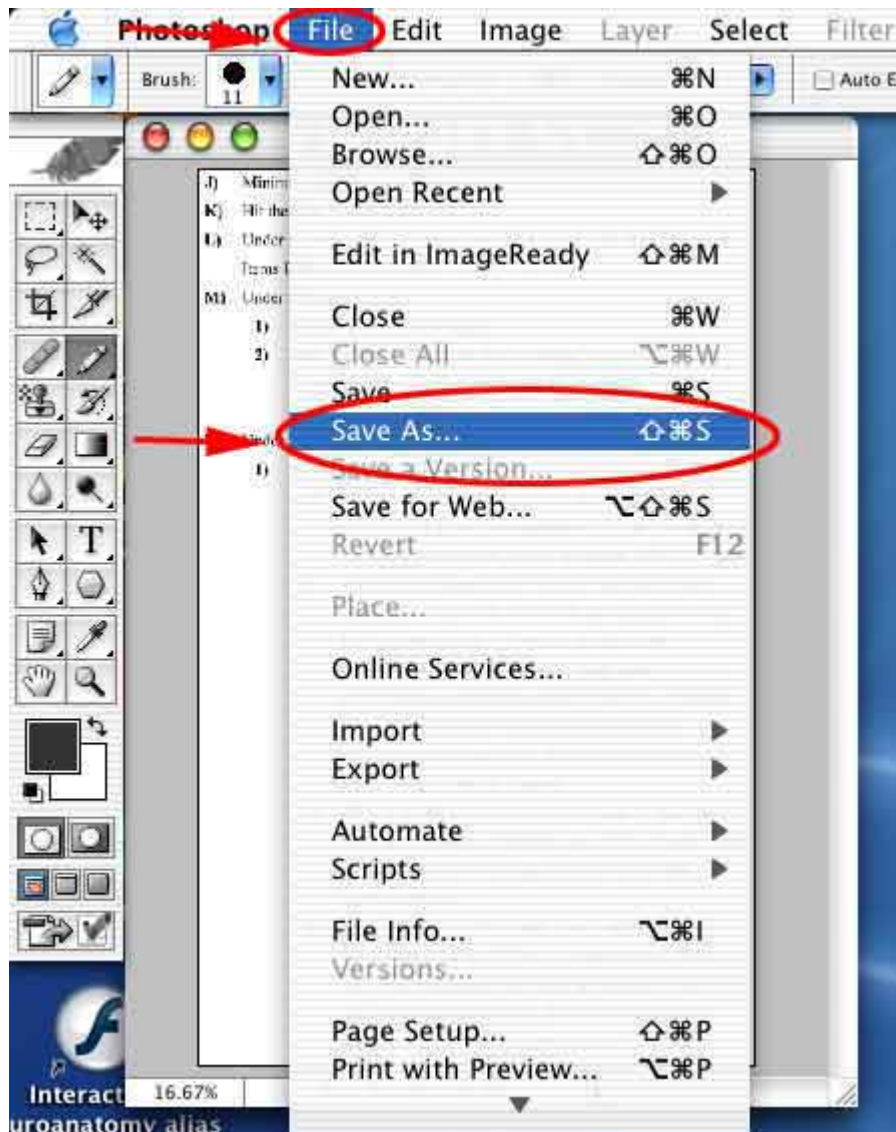


13.) Your scanned document will appear in Photoshop - if you like the way it looks you can save it; if not re-scan your document (Return to Step 3)



16.) Make any desired changes in Photoshop

17.) To save the document - Click on **File** and select **Save As**



18.) In the Save As window that opens up

- **Save As:** Name the File
- **Format:** Select the Type of File you'd like to create
- **Where:** Select where you'd like to save the file

19.) Click on **Save**

