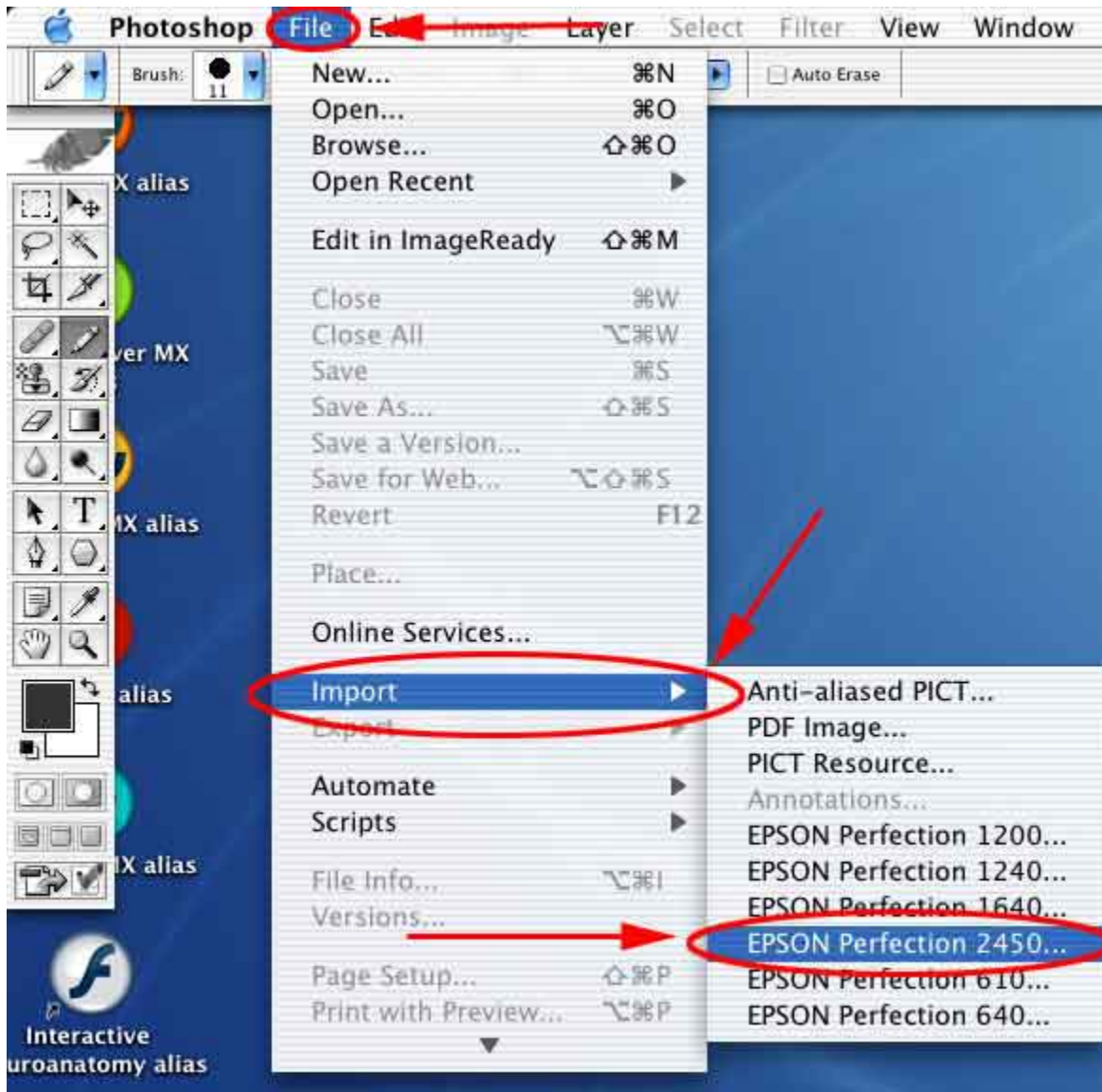


MAC Home Mode Scanning

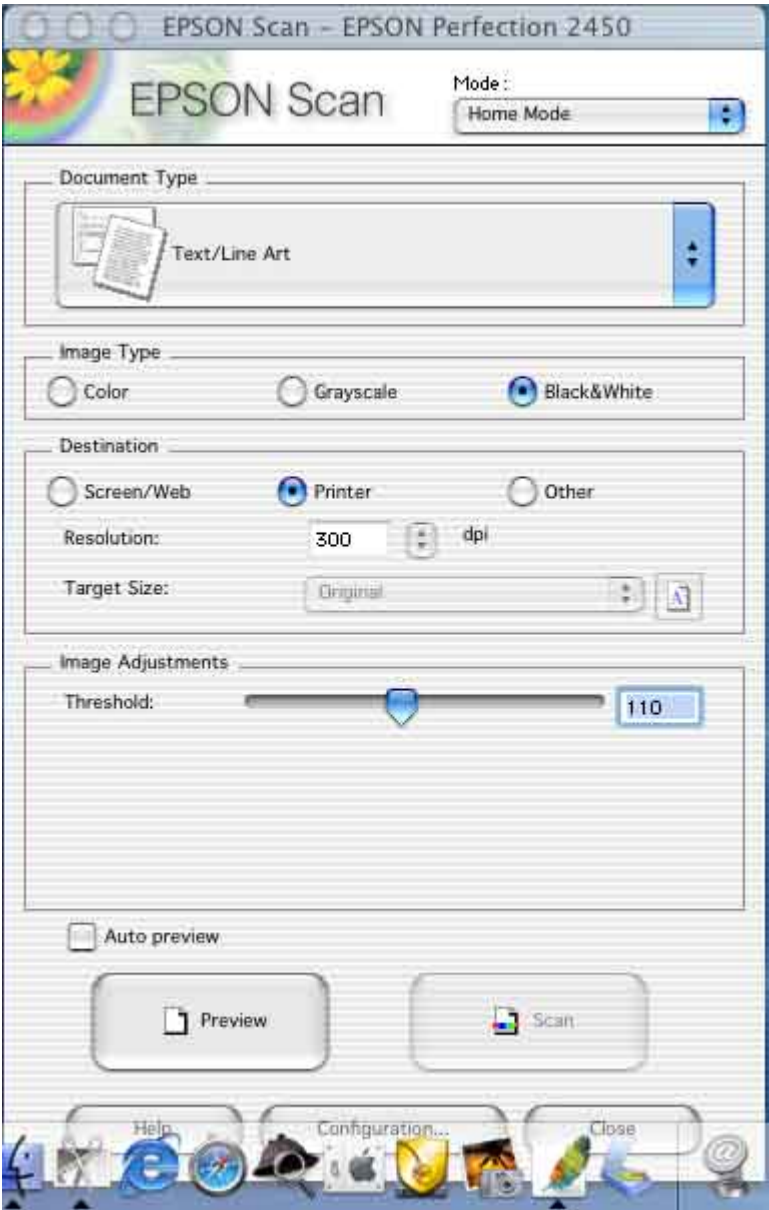
- 1.) Make sure the Scanner and Computer are turned on
- 2.) Open Adobe Photoshop (located in the Dock)



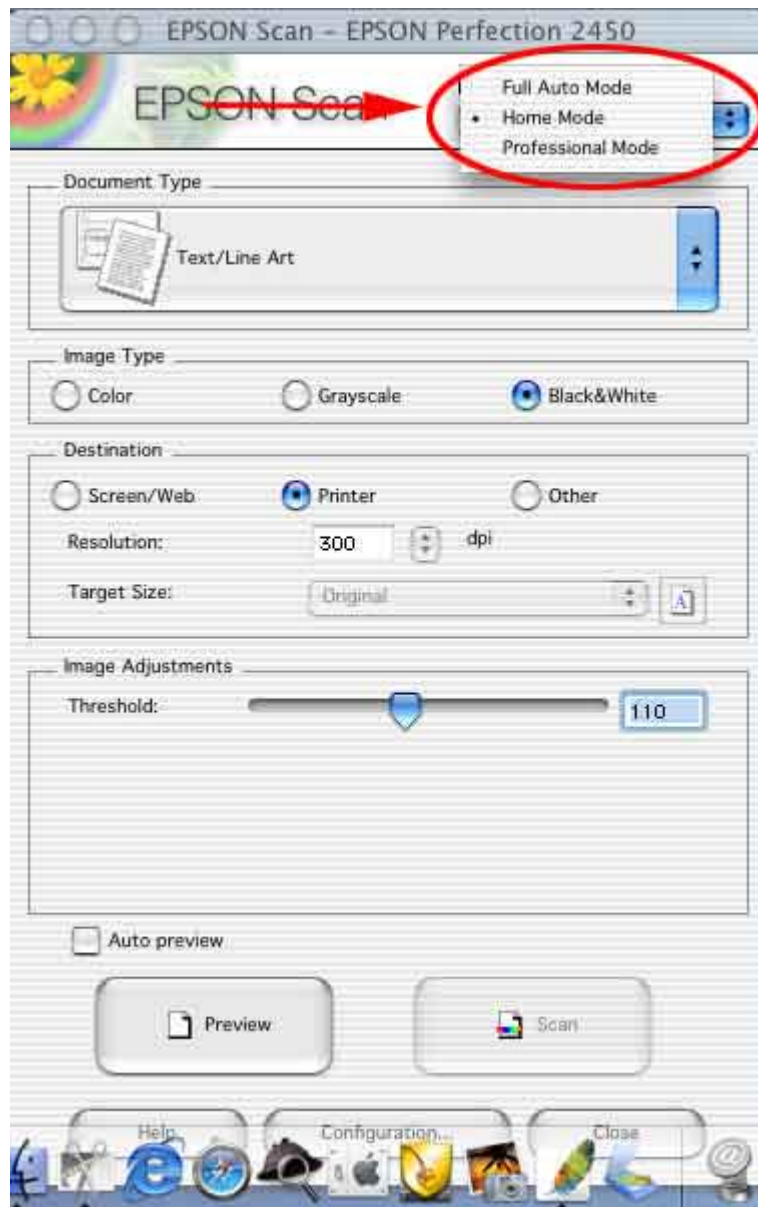
3.) Under **File** select **Import** and then **Epson Perfection 2450**



4.) The Epson Scan Utility window will open



5.) Under **Mode** select **Home Mode**



6.) Under **Document Type** - Choose the type of document you will be scanning

- Photo
- Illustration
- Magazine
- Newspaper
- Text/Line Art
- Film - **Not Recommended** - Please use the PC Scanner for Film

7.) Under **Image Type** - Choose the Coloring of the Image

- Color
- Grayscale
- Black & White

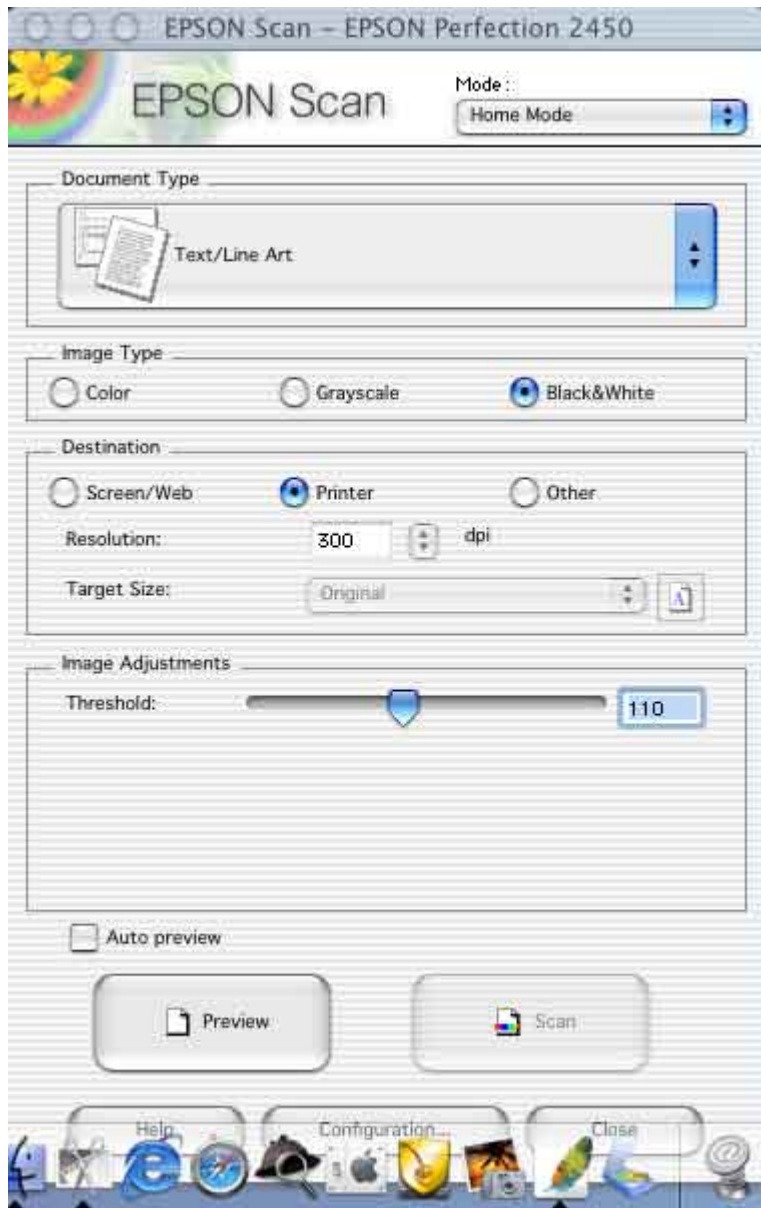
8.) Under **Destination** - Choose what you will be using the image for

- Screen/Web
- Printer
- Other (Choose your own resolution level)

9.) Under **Image Adjustments** - Make any adjustments

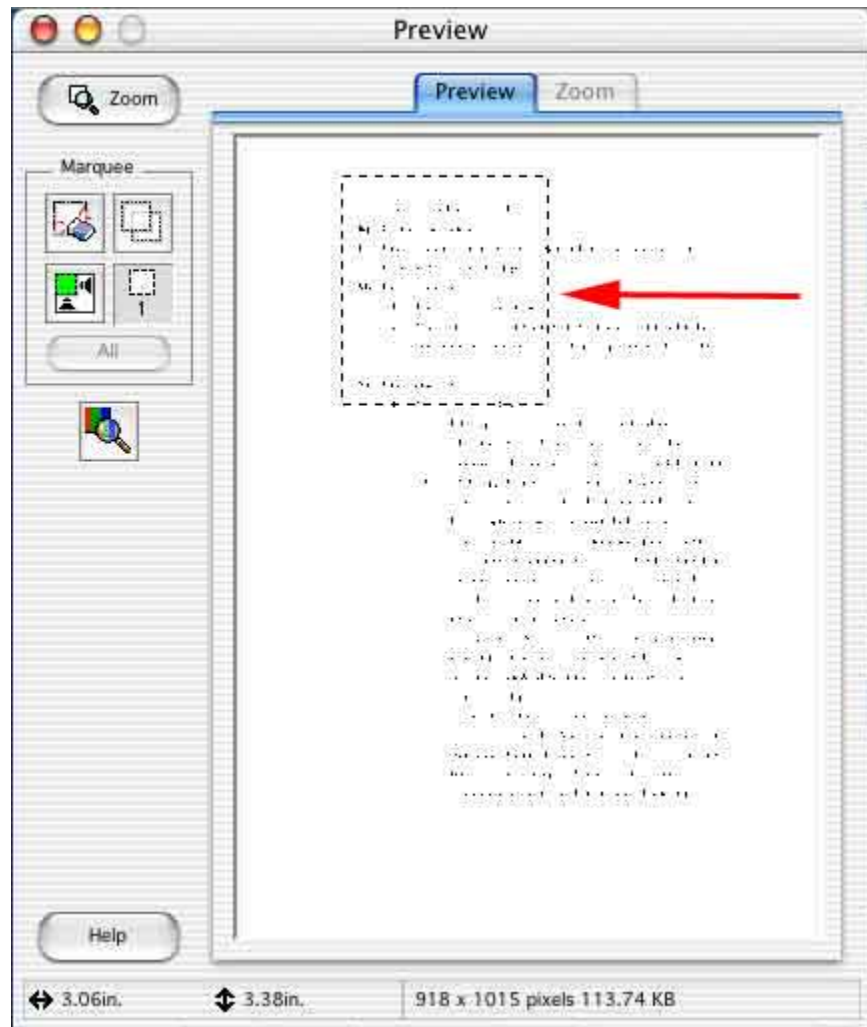
- Brightness (Color and Grayscale Scanning)
- Contrast (Color and Grayscale Scanning)
- Threshold (Black & White Scanning)
- Descreening Filter - To Learn More See the Descreening Page

10.) Click on the **Preview** button



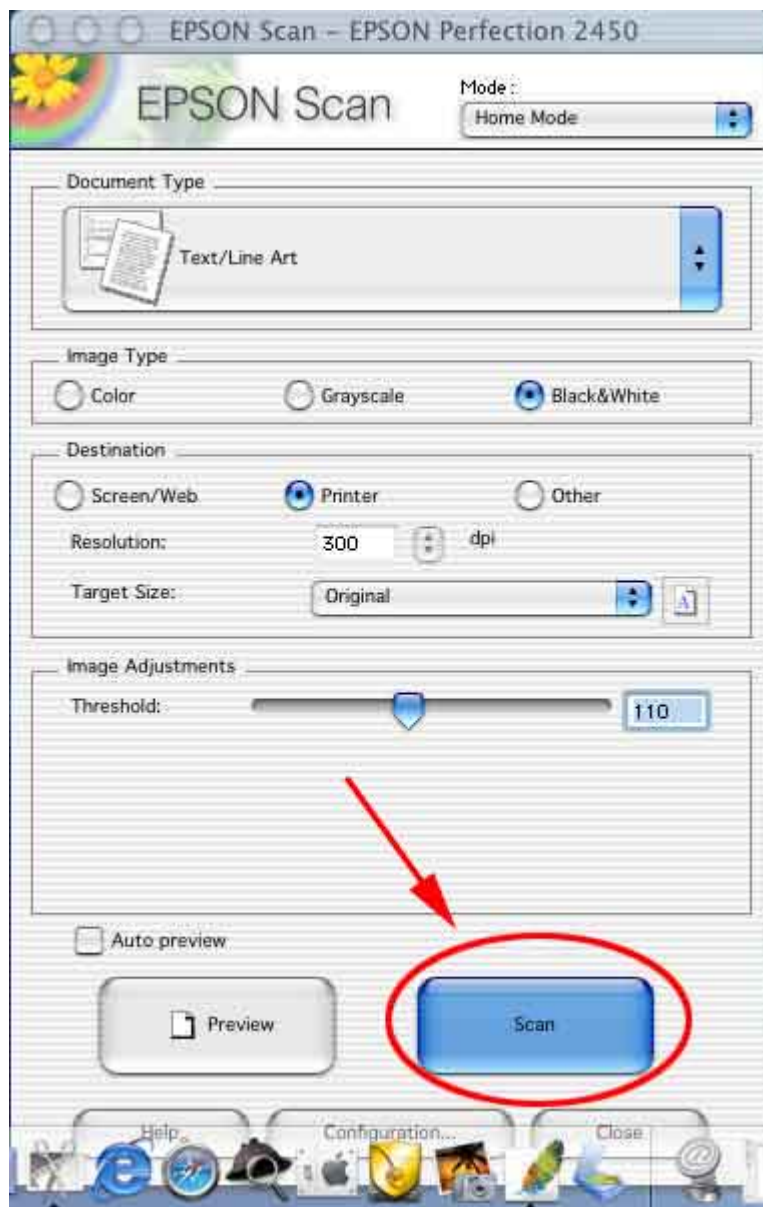
11.) If you want to highlight a certain area to be scanned, put a box around the area you'd like to scan

12.) Minimize the Preview Window (yellow button at the top of the window)

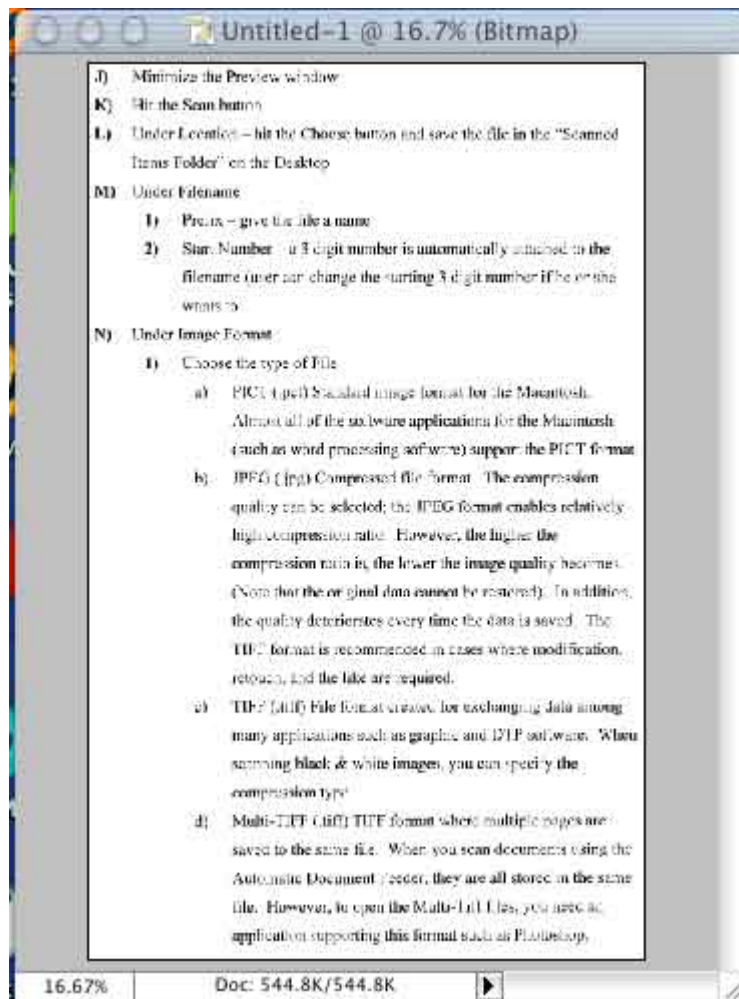


13.) If you want to specify the size of the document after it is scanned - Under **Target Size** - Change to the desired size

14.) Click on the **Scan** button

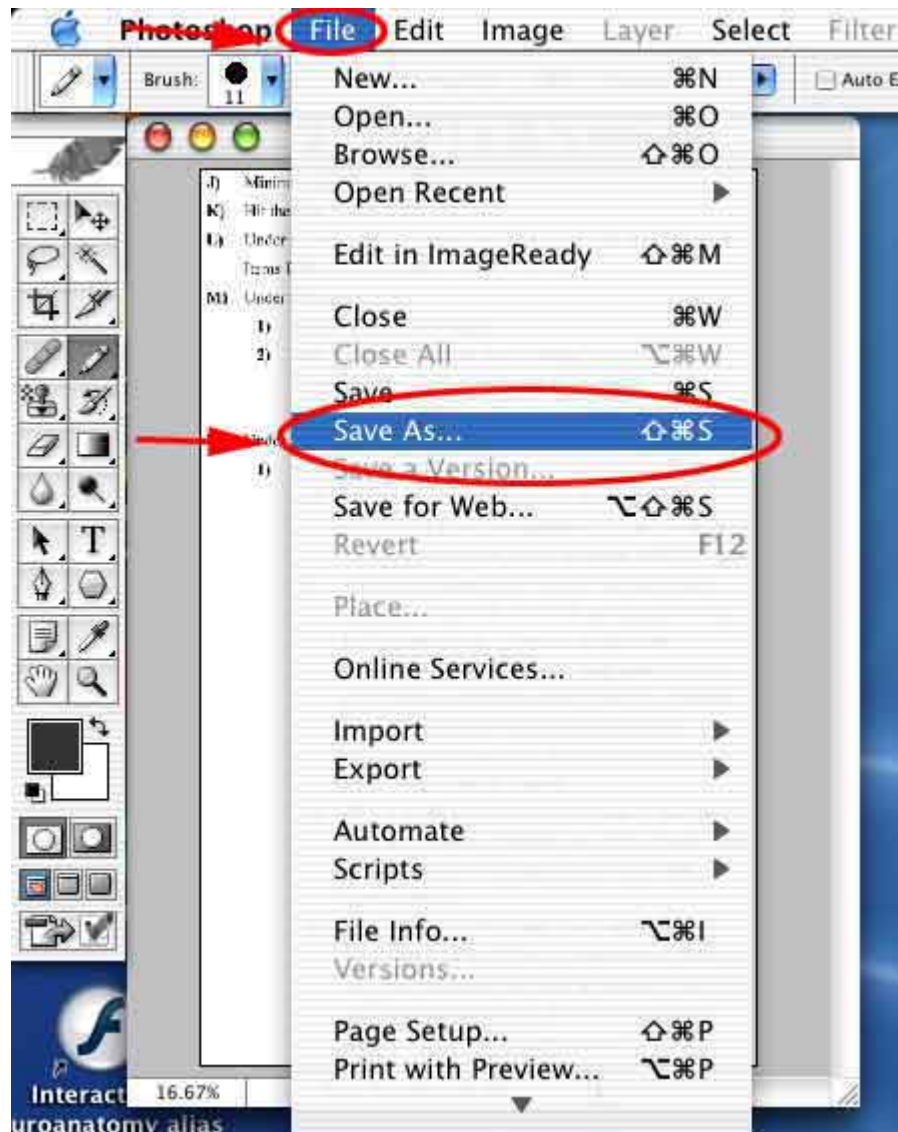


15.) Your scanned document will appear in Photoshop - if you like the way it looks you can save it; if not re-scan your document (Return to Step 3)



16.) Make any desired changes in Photoshop

17.) To save the document - Click on **File** and select **Save As**



18.) In the Save As window that opens up

- **Save As:** Name the File
- **Format:** Select the Type of File you'd like to create
- **Where:** Select where you'd like to save the file

19.) Click on **Save**

