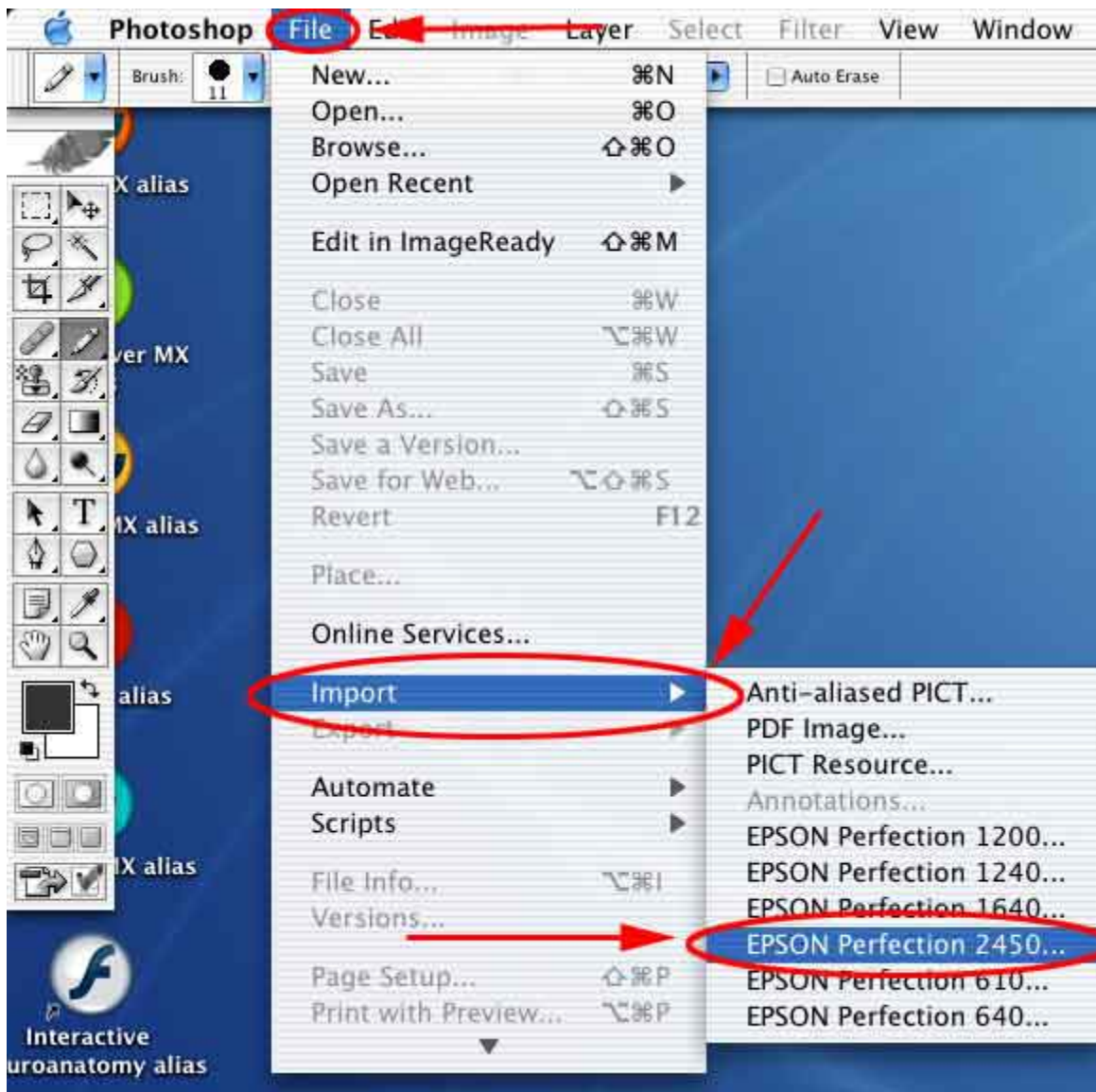


MAC Full Auto Mode Scanning

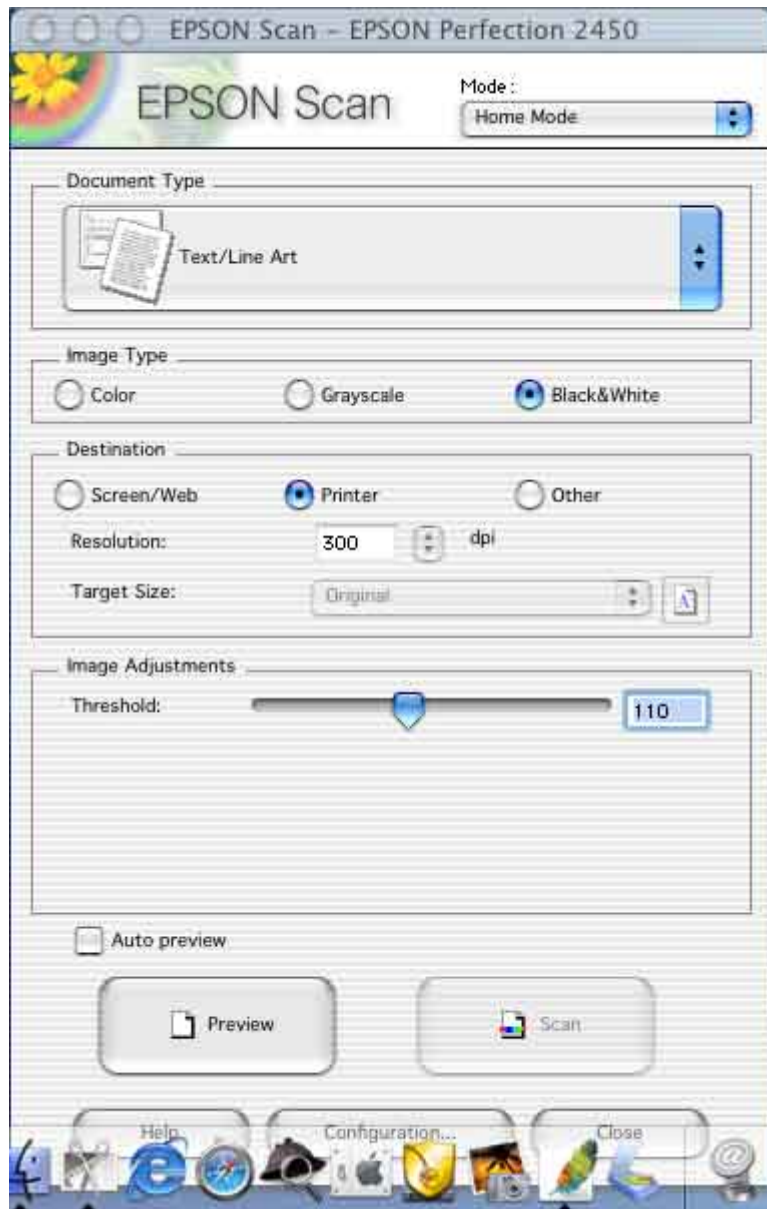
- 1.) Make sure the Scanner and Computer are turned on
- 2.) Open Adobe Photoshop (located in the Dock)



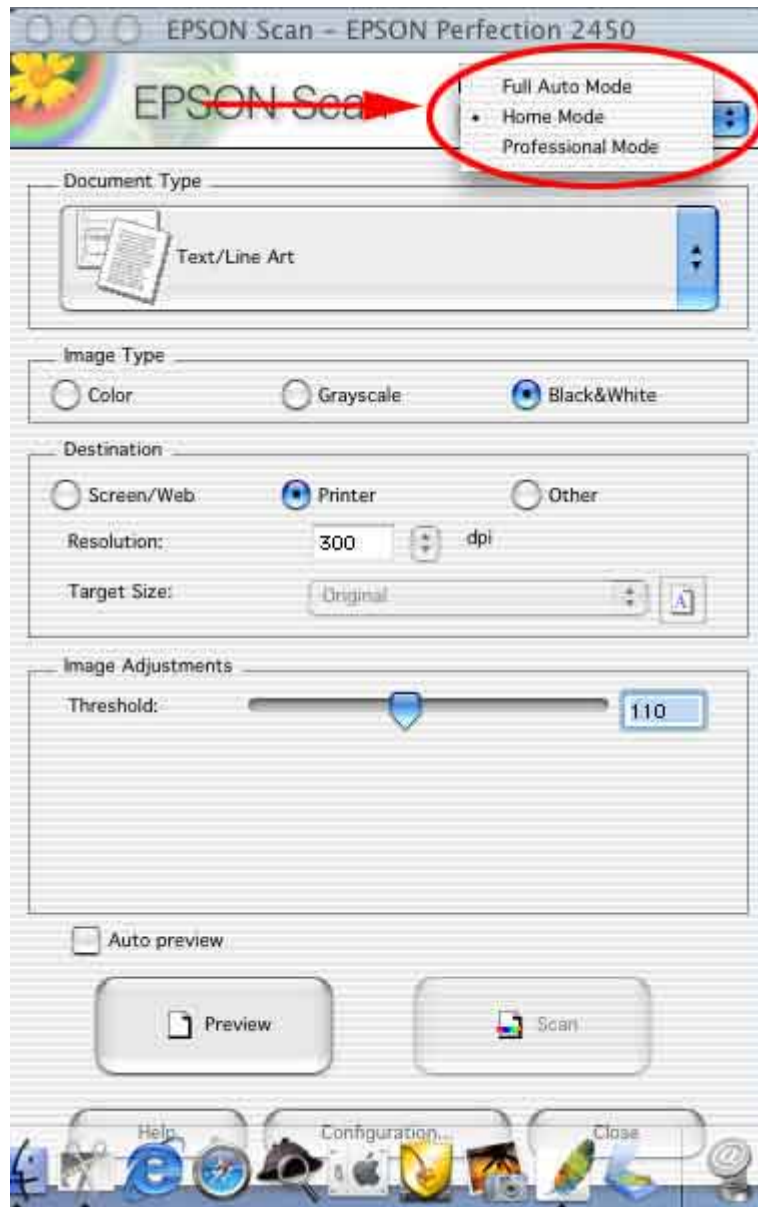
3.) Under **File** select **Import** and then **Epson Perfection 2450**



4.) The Epson Scan Utility window will open

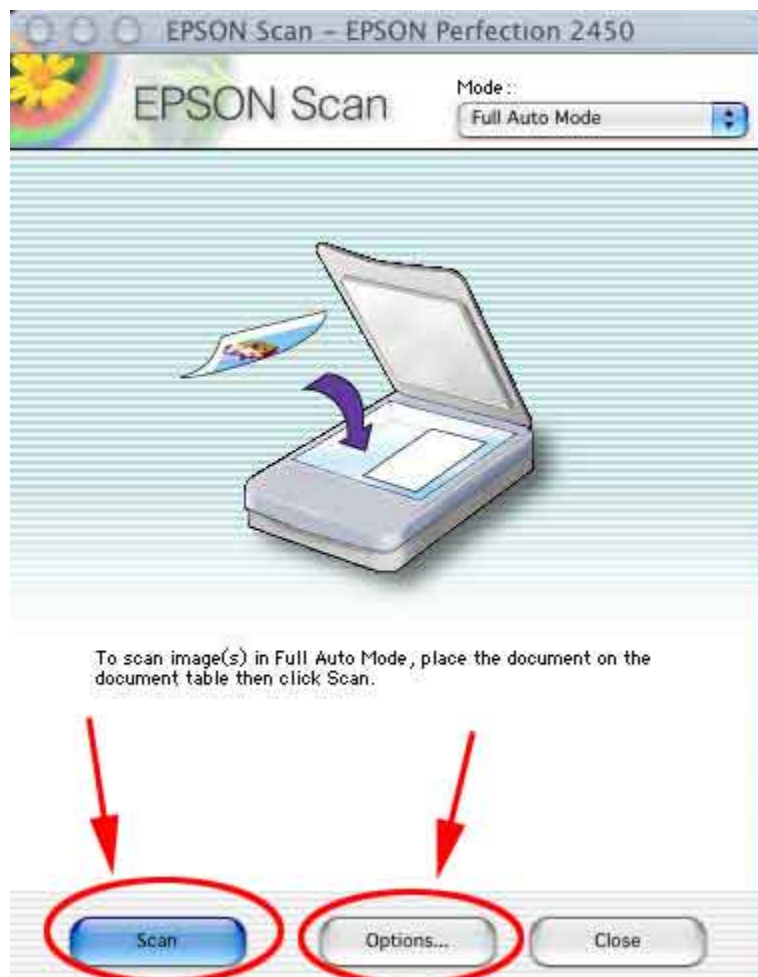


5.) Under **Mode** select **Full Auto Mode**



6a.) If you'd like to manually set the Document Type and/or Resolution click on **Options**

6b.) If you'd like to go ahead and Scan click on **Scan** (you can skip to step 10)



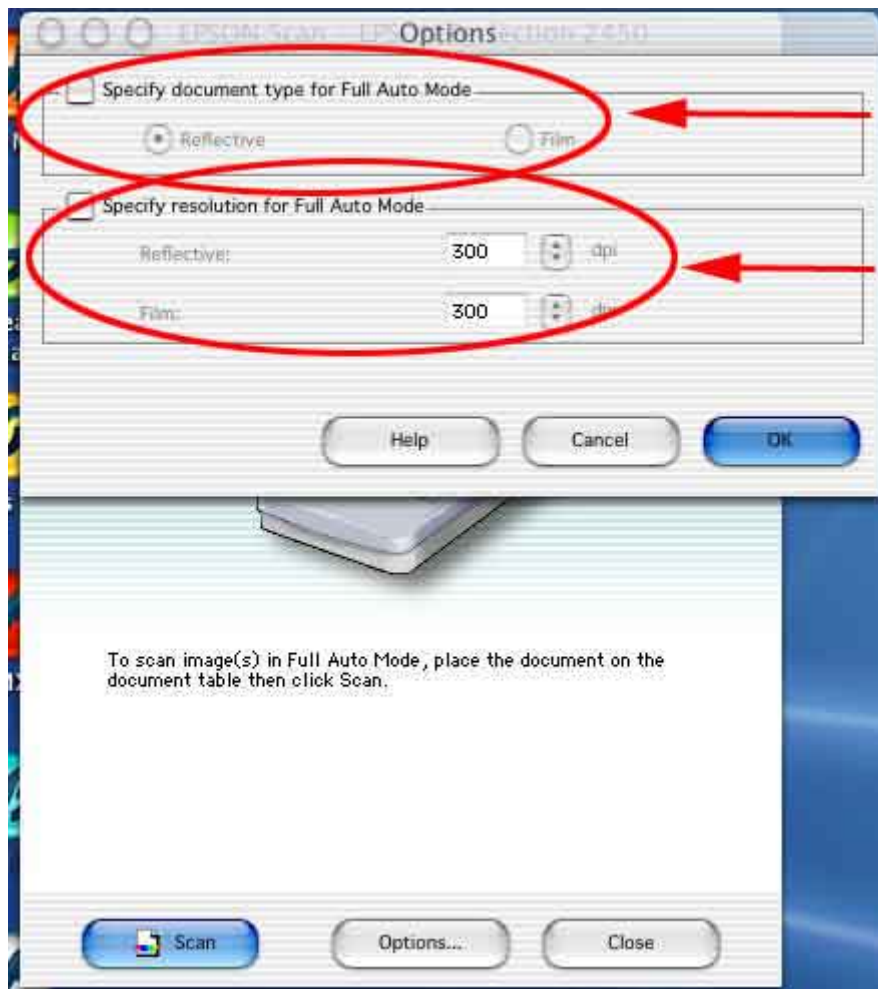
7a.) If you'd like to select the Document Type - put a check in the **Specify document type for Full Auto Mode** checkbox and select either **Reflective** or **Film**

To Learn More See Page 11

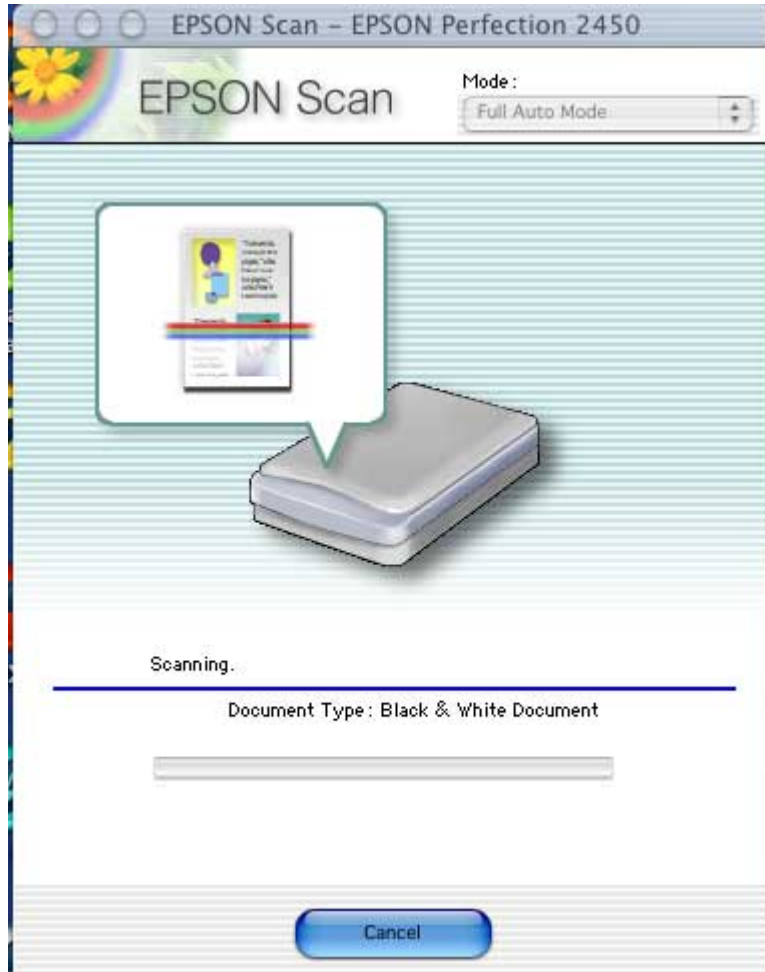
Note: Film Scanning is not recommended with the scanner, please use the PC scanner

7b.) If you'd like to change the scanning Resolution - put a check in the **Specify resolution for Full Auto Mode** checkbox and change the Resolution level

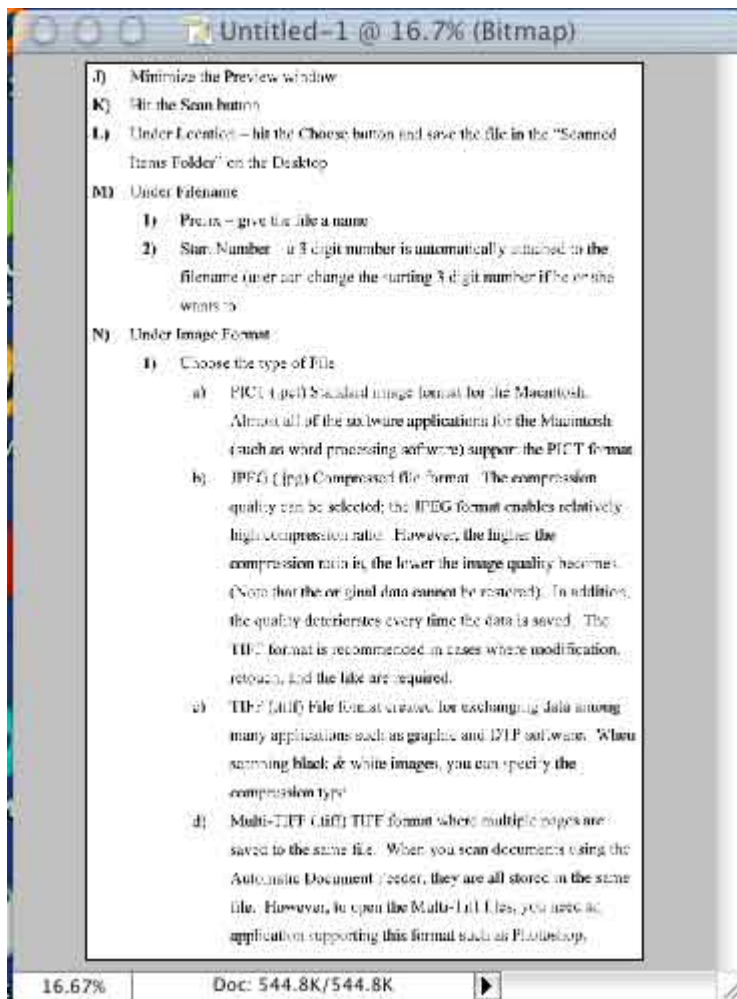
8.) Click **Ok**



9.) Click on **Scan**

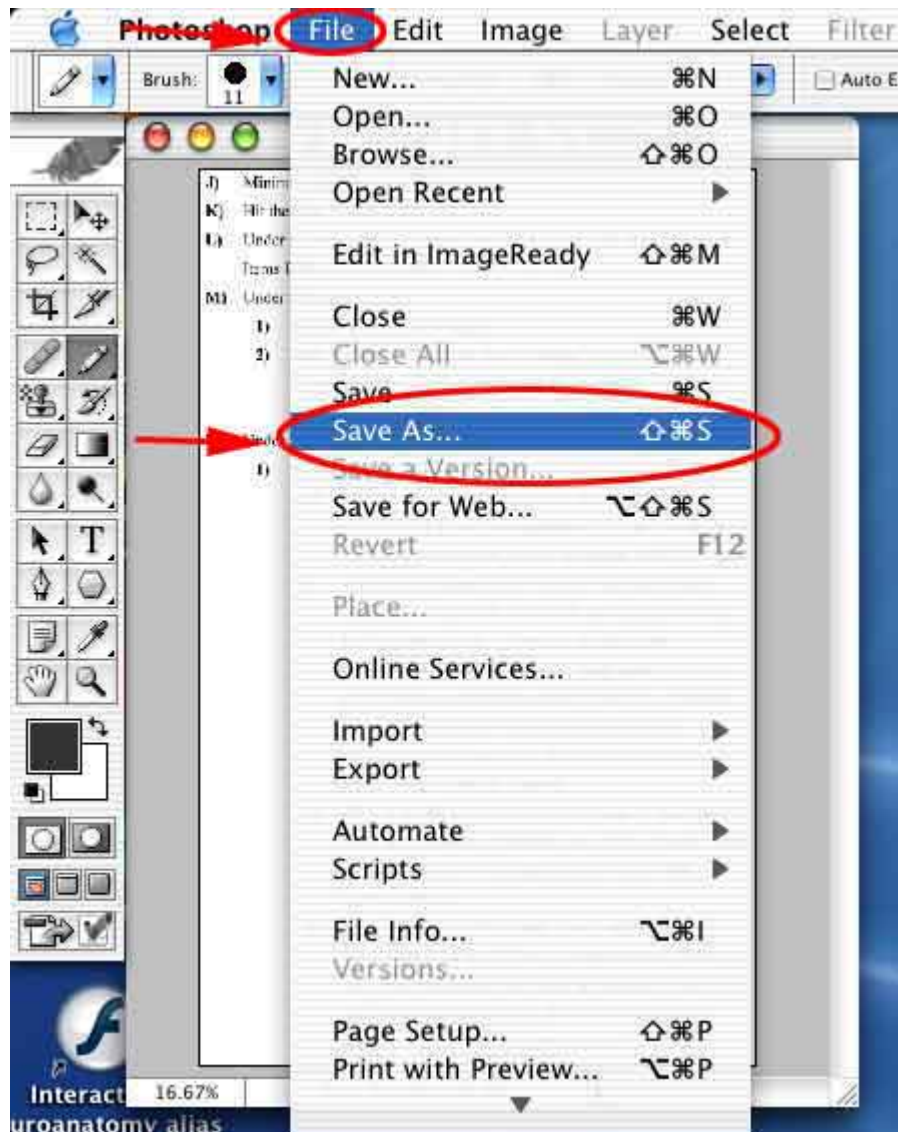


10.) Your scanned document will appear in Photoshop - if you like the way it looks you can save it; if not re-scan your document (Return to Step 3)



11.) Make any desired changes in Photoshop

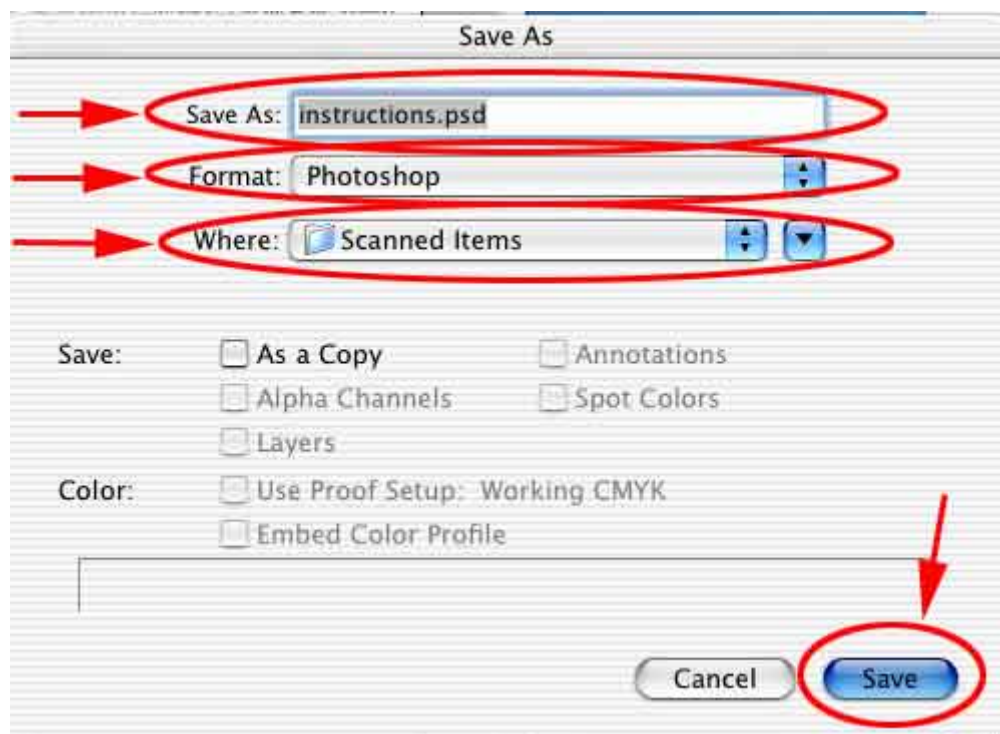
12.) To save the document - Click on **File** and select **Save As**



13.) In the Save As window that opens up

- **Save As:** Name the File
- **Format:** Select the Type of File you'd like to create
- **Where:** Select where you'd like to save the file

14.) Click on **Save**



Reflective Vs. Film Scanning

Reflective Document	Film Document
Reflective Documents include: Pictures, Articles, Text, etc.	Reflective Documents include: X-rays, Film, Transparencies, etc.